

Recombinant Rat Glp1r protein, His-tagged

Cat. No. Glp1r-5416R Lot. No. (See product label)

SPECIFICATION

Product Overview	Recombinant Rat Glp1r protein(P32301)(22-145aa), fused to N-terminal His tag, was expressed in Yeast.
Species	Rat
Source	Yeast
ProteinLength	22-145aa
Form	If the delivery form is liquid, the default storage buffer is Tris/PBS-based buffer, 5%-50% glycerol. If the delivery form is lyophilized powder, the buffer before lyophilization is Tris/PBS-based buffer, 6% Trehalose, pH 8.0.
Molecular Mass	16.3 kDa
Purity	Greater than 90% as determined by SDS-PAGE.
Storage	Store at -20°C/-80°C upon receipt, aliquoting is necessary for mutiple use. Avoid repeated freeze-thaw cycles.
Reconstitution	Please reconstitute protein in deionized sterile water to a concentration of 0.1-1.0 mg/mL. We recommend to add 5-50% of glycerol (final concentration) and aliquot for long-term storage at -20°C/-80°C. Our default final concentration of glycerol is 50%.

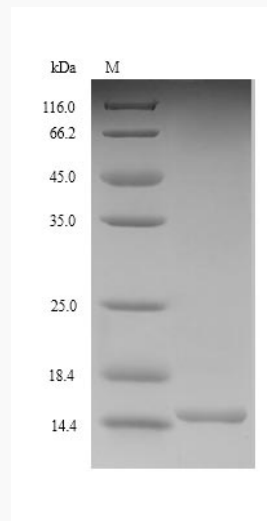
GENE INFORMATION

 Tel: 1-631-559-9269 1-516-512-3133

 Email: info@creative-biomart.com  Fax: 1-631-938-8127

 45-1 Ramsey Road, Shirley, NY 11967, USA

Gene Name	Glp1r glucagon-like peptide 1 receptor [Rattus norvegicus]
Official Symbol	Glp1r
Synonyms	GLP1R; glucagon-like peptide 1 receptor; GLP-1R; GLP-1-R; GLP-1 receptor; pancreatic beta cell receptor for the gluco-incretin hormone glucagon-like peptide 1; Glip; RATGL1RCP;
Gene ID	25051
mRNA Refseq	NM_012728
Protein Refseq	NP_036860

SDS-PAGE


Tel: 1-631-559-9269 1-516-512-3133

Email: info@creative-biomart.com Fax: 1-631-938-8127

45-1 Ramsey Road, Shirley, NY 11967, USA