

## Recombinant Rat Glra2 protein, His & T7-tagged

**Cat. No.** Glra2-1366R    **Lot. No.** (See product label)

### SPECIFICATION

<b>Product Overview</b>	Recombinant Rat Glra2 aa. (Lys28~Gln253 (Accession # P22771) fused with N-terminal His & T7 tag was produced in E. coli cells.
<b>Species</b>	Rat
<b>Source</b>	E.coli
<b>ProteinLength</b>	Lys28~Gln253
<b>Description</b>	Glycine gated chloride channel; displays strychnine-sensitive ion channel activity; may play a role in synaptogenesis.
<b>Form</b>	Freeze-dried powder
<b>Molecular Mass</b>	Predicted Molecular Mass: 29.8kDa.
<b>Endotoxin</b>	<1.0EU per 1g (determined by the LAL method)
<b>Purity</b>	>95%
<b>Characteristic</b>	The isoelectric point is 5.4.
<b>Applications</b>	SDS-PAGE; WB; ELISA; IP.
<b>Stability</b>	The thermal stability is described by the loss rate of the target protein. The loss rate

 Tel: 1-631-559-9269    1-516-512-3133

 Email: [info@creative-biomart.com](mailto:info@creative-biomart.com)     Fax: 1-631-938-8127

 45-1 Ramsey Road, Shirley, NY 11967, USA



was determined by accelerated thermal degradation test, that is, incubate the protein at 37°C for 48h, and no obvious degradation and precipitation were observed. (Referring from China Biological Products Standard, which was calculated by the Arrhenius equation.) The loss of this protein is less than 5% within the expiration date under appropriate storage condition.

<b>Storage</b>	Avoid repeated freeze/thaw cycles. Store at 2-8°C for one month. Aliquot and store at -80°C for 12 months.
<b>Storage buffer</b>	Supplied as lyophilized form in 20mM Tris, 150mM NaCl, pH8.0, containing 1mM EDTA, 1mM DTT, 0.01% sarcosyl, 5% trehalose, and preservative.
<b>Reconstitution</b>	Reconstitute in sterile ddH <sub>2</sub> O.

## GENE INFORMATION

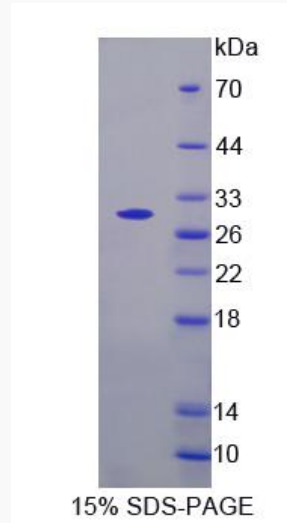
<b>Gene Name</b>	Gla2 glycine receptor, alpha 2 [ <i>Rattus norvegicus</i> (Norway rat) ]
<b>Official Symbol</b>	Gla2
<b>Synonyms</b>	Gla2; glycine receptor, alpha 2; RNNEOGLY; glycine receptor subunit alpha-2; Glycine receptor alpha 2 subunit (glycine receptor, neonatal); glycine receptor strychnine-binding subunit; glycine receptor subunit alpha-2-like
<b>Gene ID</b>	24397
<b>mRNA Refseq</b>	NM_012568.3
<b>Protein Refseq</b>	NP_036700.1
<b>UniProt ID</b>	P22771

Tel: 1-631-559-9269 1-516-512-3133

Email: [info@creative-biomart.com](mailto:info@creative-biomart.com) Fax: 1-631-938-8127

45-1 Ramsey Road, Shirley, NY 11967, USA

**SDS-PAGE**



 Tel: 1-631-559-9269 1-516-512-3133

 Email: [info@creative-biomart.com](mailto:info@creative-biomart.com)  Fax: 1-631-938-8127

 45-1 Ramsey Road, Shirley, NY 11967, USA