

Recombinant Mouse Glrx3 Protein, His-tagged

Cat. No. Glrx3-629M Lot. No. (See product label)

SPECIFICATION

Product Overview	Recombinant Mouse Glrx3(Glu73~Val320) fused with His tag at N-terminal was expressed in E. coli.
Species	Mouse
Source	E.coli
ProteinLength	Glu73~Val320
Form	PBS, pH7.4, containing 0.01% SKL, 1mM DTT, 5% Trehalose and Proclin300.
Molecular Mass	31.8kDa
Endotoxin	<1.0EU per 1g (determined by the LAL method)
Purity	> 98%
Applications	Positive Control; Immunogen; SDS-PAGE; WB. If bio-activity of the protein is needed, please check active protein.
Stability	The thermal stability is described by the loss rate. The loss rate was determined by accelerated thermal degradation test, that is, incubate the protein at 37 centigrade for 48h, and no obvious degradation and precipitation were observed. The loss rate is less than 5% within the expiration date under appropriate storage condition.

 Tel: 1-631-559-9269 1-516-512-3133

 Email: info@creative-biomart.com  Fax: 1-631-938-8127

 45-1 Ramsey Road, Shirley, NY 11967, USA

Storage Avoid repeated freeze/thaw cycles. Store at 2-8 centigrade for one month. Aliquot and store at -80 centigrade for 12 months.

Reconstitution Reconstitute in PBS or others.

GENE INFORMATION

Gene Name [Glrx3 glutaredoxin 3 \[Mus musculus \]](#)

Official Symbol [Glrx3](#)

Synonyms GLRX3; glutaredoxin 3; glutaredoxin-3; thioredoxin-like 2; PKCq-interacting protein; thioredoxin-like protein 2; PKC-theta-interacting protein; PKC interacting cousin of thioredoxin; PKC-interacting cousin of thioredoxin; PICOT; Txnl2;

Gene ID [30926](#)

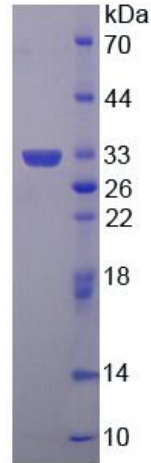
mRNA Refseq [NM_023140](#)

Protein Refseq [NP_075629](#)

 Tel: 1-631-559-9269 1-516-512-3133

 Email: info@creative-biomart.com  Fax: 1-631-938-8127

 45-1 Ramsey Road, Shirley, NY 11967, USA



15% SDS-PAGE

 Tel: 1-631-559-9269 1-516-512-3133

 Email: info@creative-biomart.com  Fax: 1-631-938-8127

 45-1 Ramsey Road, Shirley, NY 11967, USA