

## Recombinant Rat Golm1 Protein, His-tagged

Cat. No. Golm1-2727R    Lot. No. (See product label)

### SPECIFICATION

<b>Product Overview</b>	Recombinant Rat Golm1 Protein (Asp234-Ala499) with N-His tag was expressed in E. coli.
<b>Species</b>	Rat
<b>Source</b>	E.coli
<b>ProteinLength</b>	Asp234-Ala499
<b>Description</b>	Predicted to act upstream of or within nucleus organization and regulation of lipid metabolic process. Predicted to be integral component of membrane. Predicted to be active in Golgi apparatus. Orthologous to human GOLM1 (golgi membrane protein 1).
<b>Form</b>	Freeze-dried powder
<b>Molecular Mass</b>	Predicted Molecular Mass: 33.0 kDa Accurate Molecular Mass: 43 kDa
<b>Purity</b>	> 80%
<b>Applications</b>	Positive Control; Immunogen; SDS-PAGE; WB.
<b>Stability</b>	The thermal stability is described by the loss rate. The loss rate was determined by accelerated thermal degradation test, that is, incubate the protein at 37 centigrade for 48h, and no obvious degradation and precipitation were observed. The loss rate is

 Tel: 1-631-559-9269    1-516-512-3133

 Email: [info@creative-biomart.com](mailto:info@creative-biomart.com)     Fax: 1-631-938-8127

 45-1 Ramsey Road, Shirley, NY 11967, USA

less than 5% within the expiration date under appropriate storage condition.

**Storage**

Avoid repeated freeze/thaw cycles. Store at 2-8 centigrade for one month. Aliquot and store at -80 centigrade for 12 months.

**Storage Buffer**

20mM Tris, 150mM NaCl, pH8.0, containing 1mM EDTA, 1mM DTT, 0.01% SKL, 5% Trehalose and Proclin300.

**Reconstitution**

Reconstitute in 20mM Tris, 150mM NaCl (pH8.0) to a concentration of 0.1-1.0 mg/mL. Do not vortex.

## GENE INFORMATION

**Gene Name**

[Golm1 golgi membrane protein 1 \[ Rattus norvegicus \(Norway rat\) \]](#)

**Official Symbol**

[Golm1](#)

**Synonyms**

Golm1; golgi membrane protein 1; Golgi membrane protein 1; GP73; C9orf155; Golgi Protein 73

**Gene ID**

[680692](#)

**mRNA Refseq**

[XM\\_039096415](#)

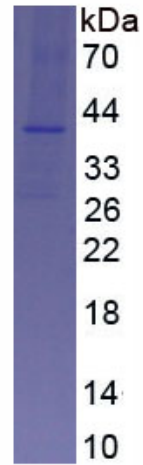
**Protein Refseq**

[XP\\_038952343](#)

 Tel: 1-631-559-9269 1-516-512-3133

 Email: [info@creative-biomart.com](mailto:info@creative-biomart.com)  Fax: 1-631-938-8127

 45-1 Ramsey Road, Shirley, NY 11967, USA



Tel: 1-631-559-9269 1-516-512-3133

Email: [info@creative-biomart.com](mailto:info@creative-biomart.com) Fax: 1-631-938-8127

45-1 Ramsey Road, Shirley, NY 11967, USA