

## Recombinant Mouse Golm1 protein, His & GST-tagged

Cat. No. Golm1-582M Lot. No. (See product label)

### SPECIFICATION

<b>Product Overview</b>	Recombinant Mouse Golm1 (Q91XA2) aa. (Ser133~Ser379) fused with His & GST tag was produced in E. coli cells.
<b>Species</b>	Mouse
<b>Source</b>	E.coli
<b>ProteinLength</b>	Ser133~Ser379
<b>Form</b>	Freeze-dried powder
<b>Molecular Mass</b>	Predicted Molecular Mass: 57.8kDa; Accurate Molecular Mass: 58kDa as determined by SDS-PAGE reducing conditions.
<b>Purity</b>	>98%
<b>Characteristic</b>	Isoelectric point is 5.2.
<b>Applications</b>	Cell culture; Activity Assays.
<b>Stability</b>	The thermal stability is described by the loss rate. The loss rate was determined by accelerated thermal degradation test, that is, incubate the protein at 37°C for 48h, and no obvious degradation and precipitation were observed. The loss rate is less than 5% within the expiration date under appropriate storage condition.

 Tel: 1-631-559-9269 1-516-512-3133

 Email: [info@creative-biomart.com](mailto:info@creative-biomart.com)  Fax: 1-631-938-8127

 45-1 Ramsey Road, Shirley, NY 11967, USA

<b>Storage</b>	Avoid repeated freeze/thaw cycles. Store at 2-8°C for one month. Aliquot and store at -80°C for 12 months.
<b>Storage buffer</b>	20mM Tris, 150mM NaCl, pH8.0, containing 0.05% sarcosyl and 5% trehalose.
<b>Reconstitution</b>	Reconstitute in 20mM Tris, 150mM NaCl (pH8.0) to a concentration of 0.1-1.0 mg/mL. Do not vortex

## GENE INFORMATION

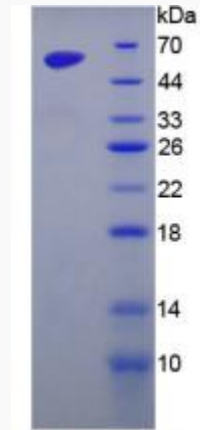
<b>Gene Name</b>	Golm1 golgi membrane protein 1 [ Mus musculus (house mouse) ]
<b>Official Symbol</b>	Golm1
<b>Synonyms</b>	Golm1; golgi membrane protein 1; GP73; Golph2; AW125446; PSEC0257; 2310001L02Rik; D030064E01Rik; golgi membrane protein GP73; golgi phosphoprotein 2
<b>Gene ID</b>	105348
<b>mRNA Refseq</b>	NM_001035122.2
<b>Protein Refseq</b>	NP_001030294.1
<b>UniProt ID</b>	Q91XA2

 Tel: 1-631-559-9269 1-516-512-3133

 Email: [info@creative-biomart.com](mailto:info@creative-biomart.com)  Fax: 1-631-938-8127

 45-1 Ramsey Road, Shirley, NY 11967, USA

**SDS-PAGE**



 Tel: 1-631-559-9269 1-516-512-3133

 Email: [info@creative-biomart.com](mailto:info@creative-biomart.com)  Fax: 1-631-938-8127

 45-1 Ramsey Road, Shirley, NY 11967, USA