

Active Recombinant Mouse Got1 Protein, His tagged

Cat. No. Got1-7214M Lot. No. (See product label)

SPECIFICATION

Product Overview	Recombinant mouse Got1 fused to His-tag at N-terminus, was expressed in E. coli and purified by using conventional chromatography techniques.
Species	Mouse
Source	E.coli
ProteinLength	1-413 aa
Description	Enables L-aspartate:2-oxoglutarate aminotransferase activity and phosphatidylserine decarboxylase activity. Involved in gluconeogenesis and malate-aspartate shuttle. Acts upstream of or within several processes, including dicarboxylic acid metabolic process; fatty acid homeostasis; and glycerol biosynthetic process. Is active in cytosol. Is expressed in several structures, including alimentary system; central nervous system; genitourinary system; integumental system; and sensory organ. Human ortholog(s) of this gene implicated in amyloidosis; amyotrophic lateral sclerosis; pancreatic ductal adenocarcinoma; and transient cerebral ischemia. Orthologous to human GOT1 (glutamic-oxaloacetic transaminase 1).
Form	Liquid in. Phosphate-Buffered Saline (pH 7.4) containing 10% glycerol, 1mM DTT
Bio-activity	Specific activity is > 80 unit/mg, and is defined as the amount of enzyme that converts 1.0 micromole of alpha-ketoglutarate to L-Glutamate per minute at pH 8.0 at 25 centigrade.

 Tel: 1-631-559-9269 1-516-512-3133

 Email: info@creative-biomart.com  Fax: 1-631-938-8127

 45-1 Ramsey Road, Shirley, NY 11967, USA

Molecular Mass	48.6 kDa (436aa) confirmed by MALDI-TOF
AASequence	<p>MAPPSVFAQVPQAPPVLVFKLTADFRDDPDRKVN LGVGAYRTDESQPWVLPVVR KVEQKIANDNSLNHEYLPILGLAEFRSCASRLVLGDNSPAIRENRVGGVQSLGGTGA LRIGADFLGRWYNGTDNKNTPIYVSSPTWENHNAVFS AAGFKDIRPYCYWDAEKRG LDLQGFLNDLENAPEFSIFVLHACAHNPTGTDPTPEQWKQIAAVMQRRFLPFFD SA YQGFASGDLEKDAWAIRYFVSEGFELFCAQSFSKNFGLYNERVGNLTVVGKESDSV LRVLSQMEKIVRITWSNPPAQQGARIVAATLSDPELFKEWKGNVKT MADRILTMRSEL RARLEALKTPGTW SHITEQIGMFSFTGLNPKQVEYLVNEKH IYLLPSGRINMCGLTTK NLDYVATSIHEAVTKIQ</p>
Purity	> 95% by SDS-PAGE
Applications	SDS-PAGE, Enzyme Activity
Notes	For research use only. This product is not intended or approved for human, diagnostics or veterinary use.
Storage	Can be stored at +2C to +8C for 1 week. For long term storage, aliquot and store at -20C to -80C. Avoid repeated freezing and thawing cycles.
Concentration	0.5 mg/mL (determined by Bradford assay)

GENE INFORMATION

Gene Name	Got1 glutamic-oxaloacetic transaminase 1, soluble [<i>Mus musculus</i> (house mouse)]
Official Symbol	Got1
Synonyms	Got1; glutamic-oxaloacetic transaminase 1, soluble; cCAT; Got-1; cAspAT; aspartate aminotransferase, cytoplasmic; cysteine aminotransferase, cytoplasmic; cysteine

 Tel: 1-631-559-9269 1-516-512-3133

 Email: info@creative-biomart.com  Fax: 1-631-938-8127

 45-1 Ramsey Road, Shirley, NY 11967, USA

transaminase, cytoplasmic; cytosolic aspartate aminotransferase; glutamate oxaloacetate transaminase 1, soluble; transaminase A; EC 2.6.1.1; EC 2.6.1.3

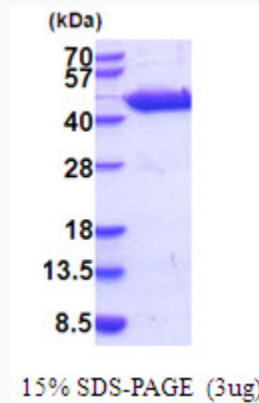
Gene ID 14718

mRNA Refseq NM_010324

Protein Refseq NP_034454

UniProt ID P05201

SDS-PAGE and WB



3 µg by SDS-PAGE under reducing condition and visualized by coomassie blue stain.

Tel: 1-631-559-9269 1-516-512-3133

Email: info@creative-biomart.com Fax: 1-631-938-8127

45-1 Ramsey Road, Shirley, NY 11967, USA