

Active Recombinant Full Length Mouse Got2 protein, His tagged

Cat. No. Got2-23MFL **Lot. No.** (See product label)

SPECIFICATION

Product Overview	Recombinant mouse GOT2 protein, fused to His-tag at N-terminus, was expressed in E.coli and purified by using conventional chromatography techniques.
Species	Mouse
Source	E.coli
ProteinLength	1-430aa
Description	Enables L-aspartate:2-oxoglutarate aminotransferase activity. Acts upstream of or within dicarboxylic acid metabolic process. Located in mitochondrion. Is expressed in several structures, including alimentary system; nervous system; respiratory system; sensory organ; and urinary system. Human ortholog(s) of this gene implicated in developmental and epileptic encephalopathy 82. Orthologous to human GOT2 (glutamic-oxaloacetic transaminase 2).
Tag	N-His
Form	Liquid
Bio-activity	Specific activity is > 20 unit/mg, and is defined as the amount of enzyme that converts 1umole of alpha-ketoglutarate to L-Glutamate per minute at pH 8.0 at 25 centigrade.
Molecular Mass	46.8 kDa (422aa) confirmed by MALDI-TOF

 Tel: 1-631-559-9269 1-516-512-3133

 Email: info@creative-biomart.com  Fax: 1-631-938-8127

 45-1 Ramsey Road, Shirley, NY 11967, USA

AA Sequence

SSWWTHVEMGPPDPILGVTEAFKRDTNSKKMNLGVGAYRDDNGKPYVLPVSRKAE
 AQIAAKNLDKEYLPIGGLAEFCKASAELALGENNEVLKSGRFVTVQTISGTGALRVGA
 SFLQRFFKFSRDVFLPKPSWGNHTPIFRDAGMQLQGYRYYPKTCGFDGSGALEDI
 SKIPEQSVLLLHACAHNPTGVDPRPEQWKEIASVVKKKNLFAFFDMAYQGFASGDG
 DKDAWAVRHFIEQGINVCLCQSYAKNMGLYGERVGAFTVVCKDAEEAKRVESQLKI
 LIRPLYSNPPLNGARIAATILTSPDLRKQWLQEVKGMADRIISMRTQLVSNLKEGSS
 HNWQHITDQIGMFCFTGLKPEQVERLTKEFSVYMTKDGRISVAGVTSGNVGYLAHAI
 HQVTK

Endotoxin < 1 EU/μg of protein (determined by LAL method)

Purity > 90% by SDS-PAGE

Applications SDS-PAGE, Enzyme Activity

Storage Can be stored at +2 to +8 centigrade for 1 week. For long term storage, aliquot and store at -20 to -80 centigrade. Avoid repeated freezing and thawing cycles.

Storage Buffer Phosphate-Buffered Saline (pH 7.4) containing 10% glycerol

Concentration 0.5 mg/mL (determined by Bradford assay)


References

1. Honorat JA., et al. (2017) PLoS One. 12(11):e0187215.
2. Han Q., et al. (2010) BMC Biochemistry. 11:19.

GENE INFORMATION

Gene Name Got2 glutamatic-oxaloacetic transaminase 2, mitochondrial [*Mus musculus* (house mouse)]

Official Symbol Got2

 Tel: 1-631-559-9269 1-516-512-3133

 Email: info@creative-biomart.com  Fax: 1-631-938-8127

 45-1 Ramsey Road, Shirley, NY 11967, USA

Synonyms GOT2; glutamate oxaloacetate transaminase 2, mitochondrial; aspartate aminotransferase, mitochondrial; FABP-1; FABPpm; transaminase A; fatty acid-binding protein; mitochondrial aspartate aminotransferase; plasma membrane fatty acid binding protein; plasma membrane-associated fatty acid-binding protein; Got-2; mAspAT; FABP-pm; AL022787; MGC102129; MGC115763

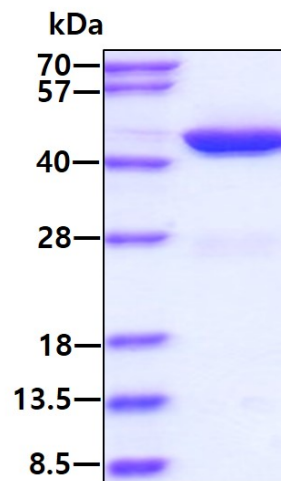
Gene ID 14719

mRNA Refseq NM_010325

Protein Refseq NP_034455

UniProt ID O09188

SDS-PAGE



3 µg by SDS-PAGE under reducing condition and visualized by coomassie blue stain.

 Tel: 1-631-559-9269 1-516-512-3133

 Email: info@creative-biomart.com  Fax: 1-631-938-8127

 45-1 Ramsey Road, Shirley, NY 11967, USA