

Recombinant Rat Gp1bb protein, His & T7-tagged

Cat. No. Gp1bb-5730R Lot. No. (See product label)

SPECIFICATION

Product Overview	Recombinant Rat Gp1bb aa. (Ala52~His164 (Accession # Q9JJM7)) fused with N-terminal His & T7 tag was produced in E. coli cells.
Species	Rat
Source	E.coli
ProteinLength	Ala52~His164
Description	Forms GP1b, a receptor for von Willebrand factor, when linked by a disulfide bond to platelet glycoprotein GP1alpha; may be involved in platelet aggregation.
Form	Freeze-dried powder
Molecular Mass	Predicted Molecular Mass: 16.3kDa
Endotoxin	<1.0EU per 1g (determined by the LAL method)
Purity	>95%
Characteristic	The isoelectric point is 8.4.
Applications	SDS-PAGE; WB; ELISA; IP.
Stability	The thermal stability is described by the loss rate. The loss rate was determined by

 Tel: 1-631-559-9269 1-516-512-3133

 Email: info@creative-biomart.com  Fax: 1-631-938-8127

 45-1 Ramsey Road, Shirley, NY 11967, USA

accelerated thermal degradation test, that is, incubate the protein at 37°C for 48h, and no obvious degradation and precipitation were observed. The loss rate is less than 5% within the expiration date under appropriate storage condition.

Storage

Avoid repeated freeze/thaw cycles. Store at 2-8°C for one month. Aliquot and store at -80°C for 12 months.

Storage buffer

Supplied as lyophilized form in PBS, pH7.4, containing 5% sucrose, 0.01% sarcosyl.

Reconstitution

Reconstitute in sterile PBS, pH7.2-pH7.4.

GENE INFORMATION

Gene Name

Gp1bb glycoprotein Ib platelet beta subunit [*Rattus norvegicus* (Norway rat)]

Official Symbol

Gp1bb

Synonyms

Gp1bb; glycoprotein Ib platelet beta subunit; platelet glycoprotein Ib beta chain; GP-Ib beta; GPIb-beta; GPIbB; glycoprotein Ib (platelet), beta polypeptide; glycoprotein Ib, beta polypeptide

Gene ID

116727

mRNA Refseq

NM_053930.4

Protein Refseq

NP_446382.1

UniProt ID

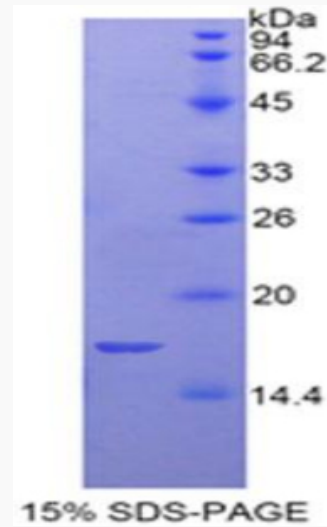
Q9JJM7

 Tel: 1-631-559-9269 1-516-512-3133

 Email: info@creative-biomart.com  Fax: 1-631-938-8127

 45-1 Ramsey Road, Shirley, NY 11967, USA

SDS-PAGE



 Tel: 1-631-559-9269 1-516-512-3133

 Email: info@creative-biomart.com  Fax: 1-631-938-8127

 45-1 Ramsey Road, Shirley, NY 11967, USA