

## Recombinant Mouse Gp1bb protein, hFc-tagged

Cat. No. Gp1bb-8855M Lot. No. (See product label)

### SPECIFICATION

<b>Product Overview</b>	Recombinant Mouse Gp1bb protein(P56400)(Pro27-Cys147), fused with C-terminal hFc tag, was expressed in HEK293.
<b>Species</b>	Mouse
<b>Source</b>	HEK293
<b>ProteinLength</b>	Pro27-Cys147
<b>Tag</b>	C-hFc
<b>Form</b>	Supplied as 0.22µm filtered solution in PBS (pH 7.4).
<b>Molecular Mass</b>	The protein has a predicted MW of 39.5 kDa. Due to glycosylation, the protein migrates to 46-50 kDa based on Tris-Bis PAGE result.
<b>Endotoxin</b>	Less than 1EU per µg by the LAL method.
<b>Purity</b>	> 95% as determined by Tris-Bis PAGE;> 95% as determined by HPLC
<b>Storage</b>	Valid for 12 months from date of receipt when stored at -80°C. Recommend to aliquot the protein into smaller quantities for optimal storage. Please do not repeated freeze-thaw cycles.
<b>Reconstitution</b>	It is recommended that sterile water be added to the vial to prepare a stock solution of

 Tel: 1-631-559-9269 1-516-512-3133

 Email: [info@creative-biomart.com](mailto:info@creative-biomart.com)  Fax: 1-631-938-8127

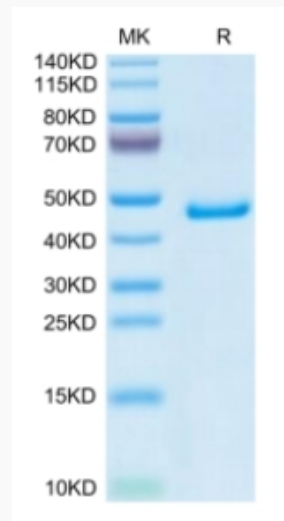
 45-1 Ramsey Road, Shirley, NY 11967, USA

0.2 ug/ul. Centrifuge the vial at 4°C before opening to recover the entire contents.

## GENE INFORMATION

<b>Gene Name</b>	Gp1bb glycoprotein Ib, beta polypeptide [ <i>Mus musculus</i> ]
<b>Official Symbol</b>	Gp1bb
<b>Synonyms</b>	GP1BB; glycoprotein Ib, beta polypeptide; platelet glycoprotein Ib beta chain; GPIbB; GPIb-beta; GP-Ib beta;
<b>Gene ID</b>	14724
<b>mRNA Refseq</b>	NM_001001999
<b>Protein Refseq</b>	NP_001001999

### Tris-Bis PAGE



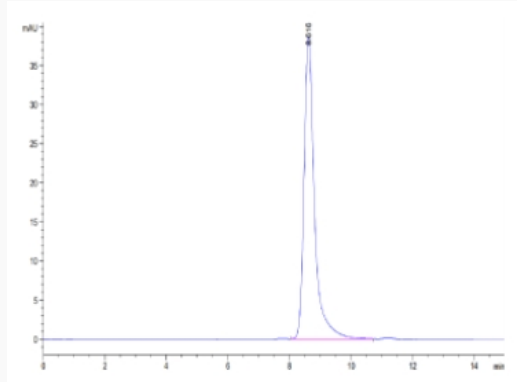
Tel: 1-631-559-9269 1-516-512-3133

Email: [info@creative-biomart.com](mailto:info@creative-biomart.com) Fax: 1-631-938-8127

45-1 Ramsey Road, Shirley, NY 11967, USA



SEC-HPLC



Tel: 1-631-559-9269 1-516-512-3133

Email: [info@creative-biomart.com](mailto:info@creative-biomart.com) Fax: 1-631-938-8127

45-1 Ramsey Road, Shirley, NY 11967, USA