

## Recombinant Mouse Gp2 protein, His-tagged

Cat. No. Gp2-521M Lot. No. (See product label)

### SPECIFICATION

<b>Product Overview</b>	Recombinant Mouse Gp2 protein(Q9D733)(22-531aa), fused with N-terminal His tag, was expressed in E.coli.
<b>Species</b>	Mouse
<b>Source</b>	E.coli
<b>ProteinLength</b>	22-531aa
<b>Form</b>	If the delivery form is liquid, the default storage buffer is Tris/PBS-based buffer, 5%-50% glycerol. If the delivery form is lyophilized powder, the buffer before lyophilization is Tris/PBS-based buffer, 6% Trehalose, pH 8.0.
<b>Molecular Mass</b>	63.0 kDa
<b>Purity</b>	Greater than 85% as determined by SDS-PAGE.
<b>Storage</b>	Store at -20°C/-80°C upon receipt, aliquoting is necessary for mutiple use. Avoid repeated freeze-thaw cycles.
<b>Reconstitution</b>	We recommend that this vial be briefly centrifuged prior to opening to bring the contents to the bottom. Please reconstitute protein in deionized sterile water to a concentration of 0.1-1.0 mg/mL. We recommend to add 5-50% of glycerol (final concentration) and aliquot for long-term storage at -20°C/-80°C.

 Tel: 1-631-559-9269 1-516-512-3133

 Email: [info@creative-biomart.com](mailto:info@creative-biomart.com)  Fax: 1-631-938-8127

 45-1 Ramsey Road, Shirley, NY 11967, USA

**AA Sequence**

STIHQGYGRPRNSSNLDLDCGSPDSPSSGICFDPCQNHTVLNDPTRSTENNDSSVA  
 WCDDNLHGWYRFVGDGGVKMPETCVSVFRCHTSAPMWLWLSGSHPI LGD GIVSHTA  
 CANWNENCCFWRSEVQVKACSEELGEYHVYKLGQTPECSLRYCTDPSTAPKNCEI  
 TCRPEEECVFQNNNWSCVCRQDLHVSDSQSLQPLLDCGDNEIKVKLDKCLLGGMG  
 FKEEIIAYLNDRNCNGTMQDEPNWVSM TSPVANYCGNILEKNGTHAIYRNTLSLA  
 TDFIIRDFRVNVNFQ CAYPLDMSVSLETALQPIVSSLTVDVDGAGEFNVKMALFQDQ  
 SYTNPYEGAEVLLPVESILYVGVLLNRGDTSRFKLLL TNCYATPSEDRHDPVKYFIKN  
 RCPNQRDSTINVRENGVSSSRFSVQMFMFAGNYDLVFLHCEVYLC DSTTEQCQP  
 SCSTNRLRSSRPAIDYNRVLDLGPITKRSAQSSATSKGTPHTTGFLAWPMFFLPVF  
 LALLF

## GENE INFORMATION

**Gene Name** [Gp2 glycoprotein 2 \(zymogen granule membrane\) \[ Mus musculus \]](#)

**Official Symbol** [Gp2](#)

**Synonyms**

GP2; glycoprotein 2 (zymogen granule membrane); pancreatic secretory granule membrane major glycoprotein GP2; pancreatic zymogen granule membrane protein GP-2; AV060639; 2310037118Rik; MGC141315;

**Gene ID** [67133](#)

**mRNA Refseq** [NM\\_025989](#)

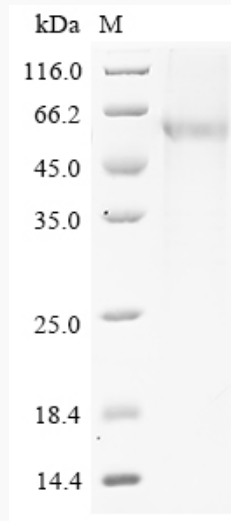
**Protein Refseq** [NP\\_080265](#)

 Tel: 1-631-559-9269 1-516-512-3133

 Email: [info@creative-biomart.com](mailto:info@creative-biomart.com)  Fax: 1-631-938-8127

 45-1 Ramsey Road, Shirley, NY 11967, USA

**SDS-PAGE**



 Tel: 1-631-559-9269 1-516-512-3133

 Email: [info@creative-biomart.com](mailto:info@creative-biomart.com)  Fax: 1-631-938-8127

 45-1 Ramsey Road, Shirley, NY 11967, USA