

Recombinant Mouse Gpc3 protein, His-tagged

Cat. No. Gpc3-1118M Lot. No. (See product label)

SPECIFICATION

Product Overview	Recombinant Mouse Gpc3 (Gln25-Met557) protein was fused to His-tag at C-terminus and expressed in human 293 cells (HEK293).
Species	Mouse
Source	HEK293
ProteinLength	Gln25-Met557
Description	Glypican-3 (GPC3) is also known as Intestinal protein OCI-5, GTR2-2, MXR7, which belongs to the glypican family. Glypican 3/GPC-3 is highly expressed in lung, liver and kidney. Glypican-3 inhibits the dipeptidyl peptidase activity of DPP4. Glypican-3 may be involved in the suppression/modulation of growth in the predominantly mesodermal tissues and organs, and also may play a role in the modulation of IGF2 interactions with its receptor and thereby modulate its function.
Predicted N Terminal	Gln25
Form	Lyophilized from 0.22 µm filtered solution in PBS, pH7.4, 10% trehalose.
Molecular Mass	The protein has a calculated MW of 62.4 kDa. The protein migrates as 40 kDa and 66-150 kDa under reducing (R) condition (SDS-PAGE) due to glycosylation.
Endotoxin	Less than 1.0 EU per µg by the LAL method.

 Tel: 1-631-559-9269 1-516-512-3133

 Email: info@creative-biomart.com  Fax: 1-631-938-8127

 45-1 Ramsey Road, Shirley, NY 11967, USA

Purity	>95% as determined by SDS-PAGE.
Storage	<p>For long term storage, the product should be stored at lyophilized state at -20 centigrade or lower.</p> <p>Please avoid repeated freeze-thaw cycles.</p> <p>This product is stable after storage at:</p> <p>-20 to -70 centigrade for 12 months in lyophilized state; -70 centigrade for 3 months under sterile conditions after reconstitution.</p>
Reconstitution	It is recommended that sterile water be added to the vial to prepare a stock solution of 0.2 ug/ul. Centrifuge the vial at 4°C before opening to recover the entire contents.

GENE INFORMATION

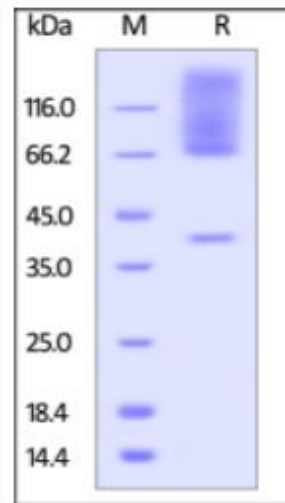
Gene Name	Gpc3
Official Symbol	Gpc3
Synonyms	GPC3; glypican 3; glypican-3; OCI-5
Gene ID	14734
mRNA Refseq	NM_016697
Protein Refseq	NP_057906
UniProt ID	Q8CFZ4

 Tel: 1-631-559-9269 1-516-512-3133

 Email: info@creative-biomart.com  Fax: 1-631-938-8127

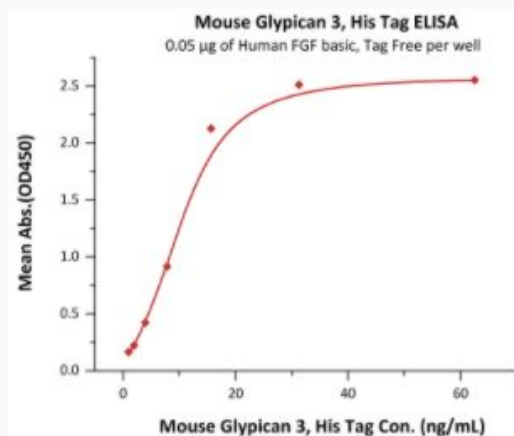
 45-1 Ramsey Road, Shirley, NY 11967, USA

SDS-PAGE of Gpc3-1118M



Mouse Glypican 3, His Tag on SDS-PAGE under reducing (R) condition. The gel was stained overnight with Coomassie Blue. The purity of the protein is greater than 95%.

Bioactivity-ELISA of Gpc3-1118M



Immobilized Human FGF basic, Tag Free at 0.5 µg/mL (100 µL/well) can bind Mouse Glypican 3, His Tag with a linear range of 1-16 ng/mL (QC tested).

Tel: 1-631-559-9269 1-516-512-3133

Email: info@creative-biomart.com Fax: 1-631-938-8127

45-1 Ramsey Road, Shirley, NY 11967, USA