

Active Recombinant Rat Gpc5 protein, His-tagged

Cat. No. Gpc5-8633R **Lot. No.** (See product label)

SPECIFICATION

Product Overview	Active Recombinant Rat Gpc5 protein(F1M6G7)(27-241 aa), fused with N-terminal His tag, was expressed in E.coli.
Species	Rat
Source	E.coli
ProteinLength	27-241 aa
Form	PBS, pH7.4, containing 0.01% SKL, 1mM DTT, 5% Trehalose and Proclin300.
Bio-activity	Glypican 5 (GPC5) belongs to the glypican family of proteoglycans that are linked to the cell surface through a glycosyl-phosphatidylinositol anchor. GPC5 is expressed primarily in embryonic neurons and mesenchyme and it is implicated in a variety of physiological processes, ranging from cell proliferation to morphogenesis. Besides, Syndecan 1 (SDC1) has been identified as an interactor of GPC5, thus a functional binding ELISA assay was conducted to detect the interaction of recombinant rat GPC5 and recombinant human SDC1. Briefly, GPC5 was diluted serially in PBS with 0.01% BSA (pH 7.4). Duplicate samples of 100 µl were then transferred to SDC1-coated microtiter wells and incubated for 1h at 37°C. Wells were washed with PBST and incubated for 1h with anti-GPC5 pAb, then aspirated and washed 3 times. After incubation with HRP labelled secondary antibody for 1h at 37°C, wells were aspirated and washed 5 times. With the addition of substrate solution, wells were incubated 15-25 minutes at 37°C. Finally, add 50 µ stop solution to the wells and read at 450/630

 Tel: 1-631-559-9269 1-516-512-3133

 Email: info@creative-biomart.com  Fax: 1-631-938-8127

 45-1 Ramsey Road, Shirley, NY 11967, USA

nm immediately. The binding activity of recombinant rat GPC5 and recombinant human SDC1 was shown, the EC50 for this effect is 0.6 ug/mL.

Molecular Mass	27.8kDa
Endotoxin	<1.0EU per 1µg (determined by the LAL method).
Purity	> 90%
Storage	Avoid repeated freeze/thaw cycles. Store at 2-8°C for one month. Store at -20°C for 12 months. Aliquot and store at -80°C for 12 months.
Reconstitution	Reconstitute in 10mM PBS (pH7.4) to a concentration of 0.1-1.0 mg/mL. Do not vortex.

GENE INFORMATION

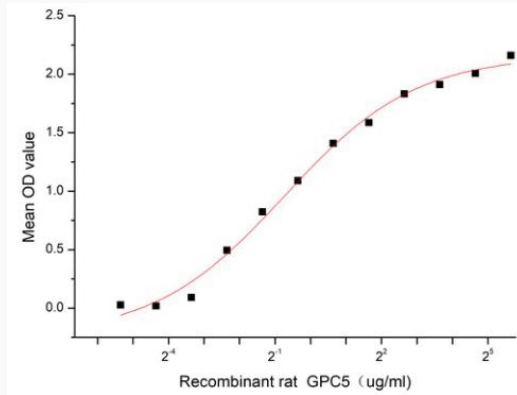
Gene Name	Gpc5 glypican 5 [Rattus norvegicus]
Official Symbol	Gpc5
Synonyms	GPC5; glypican 5;
Gene ID	306157
mRNA Refseq	NM_001107285
Protein Refseq	NP_001100755

 Tel: 1-631-559-9269 1-516-512-3133

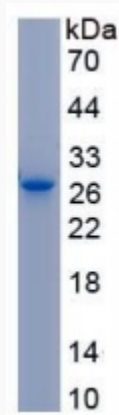
 Email: info@creative-biomart.com  Fax: 1-631-938-8127

 45-1 Ramsey Road, Shirley, NY 11967, USA

Activity



SDS-PAGE



 Tel: 1-631-559-9269 1-516-512-3133

 Email: info@creative-biomart.com  Fax: 1-631-938-8127

 45-1 Ramsey Road, Shirley, NY 11967, USA