

Recombinant Rat Gpi protein, His-tagged

Cat. No. Gpi-4522R **Lot. No.** (See product label)

SPECIFICATION

Product Overview	Recombinant Rat Gpi protein(Q6P6V0)(2-558aa), fused with C-terminal His tag, was expressed in Yeast.
Species	Rat
Source	Yeast
ProteinLength	2-558aa
Tag	C-His
Form	If the delivery form is liquid, the default storage buffer is Tris/PBS-based buffer, 5%-50% glycerol. If the delivery form is lyophilized powder, the buffer before lyophilization is Tris/PBS-based buffer, 6% Trehalose, pH 8.0.
Molecular Mass	63.8 kDa
Purity	Greater than 90% as determined by SDS-PAGE.
Storage	Store at -20°C/-80°C upon receipt, aliquoting is necessary for mutiple use. Avoid repeated freeze-thaw cycles.
Reconstitution	We recommend that this vial be briefly centrifuged prior to opening to bring the contents to the bottom. Please reconstitute protein in deionized sterile water to a concentration of 0.1-1.0 mg/mL. We recommend to add 5-50% of glycerol (final

 Tel: 1-631-559-9269 1-516-512-3133

 Email: info@creative-biomart.com  Fax: 1-631-938-8127

 45-1 Ramsey Road, Shirley, NY 11967, USA

concentration) and aliquot for long-term storage at -20°C/-80°C.

AA Sequence

AALTRNPEFQKLEWHRANSANLKLRELFEADPERFNHFSNLNLTNHGHILLDYSKN
 LVNKEVLHMLVDLAKSRGVEAARDNMFSGLKINSTEDRAVLHVALRNRSNRSIMMD
 GKDVMPENVKVLDKMKSFCQVRSGDWKGYTGKAITDIINIGIGGSDLGPLMVTEAL
 KPYSKGGPRVWFVSNIDGTHIAKTLANLNPESSLFIIASKTFTTQETITNAETAKEWFL
 QAAKDPSAVAKHFVALSTNTDKVKEFGIDPKNMFEFWDWVGGRYSLWSAIGLSIAL
 HVGFDHFEQLLSGAHWMDQHFMKTPLDKNAPVLLALLGIWYINIFYGCETHAMPLPYD
 QYMRFAAYFQQGDMESNGKYITKSGARVDYQTGPIVWGEPTNGQHAFYQLIHQ
 GTKMIPCDFLIPVQTQHPIRNLHKKILLANFLAQTEALMKGKSPPEARKELQAAGKS
 PEELEKLLPHKVFEGNRPTNSIVFTKLTFFILGALIAMYEHKIFVQGIWDINSFDQWGV
 ELGKQLAKKIEPELDGSSAVTSHDSSTNGLIGFIKLQRDTKID

GENE INFORMATION

Gene Name [Gpi glucose-6-phosphate isomerase \[Rattus norvegicus \]](#)

Official Symbol [Gpi](#)

Synonyms GPI; glucose-6-phosphate isomerase; NLK; PGI; PHI; neuroleukin; phosphohexose isomerase; phosphoglucose isomerase; autocrine motility factor; glucose phosphate isomerase; Amf; Gpi1;

Gene ID [292804](#)

mRNA Refseq [NM_207592](#)

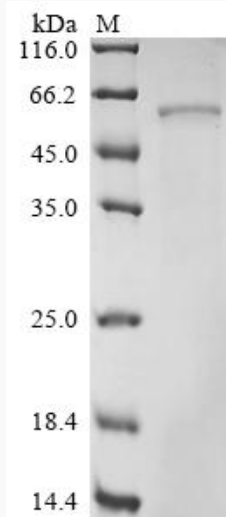
Protein Refseq [NP_997475](#)

 Tel: 1-631-559-9269 1-516-512-3133

 Email: info@creative-biomart.com  Fax: 1-631-938-8127

 45-1 Ramsey Road, Shirley, NY 11967, USA

SDS-PAGE



 Tel: 1-631-559-9269 1-516-512-3133

 Email: info@creative-biomart.com  Fax: 1-631-938-8127

 45-1 Ramsey Road, Shirley, NY 11967, USA