

Recombinant Mouse Gpi1 protein, His-tagged

Cat. No. Gpi1-722M Lot. No. (See product label)

SPECIFICATION

Product Overview	Recombinant Mouse Gpi1 aa. (Leu308~Glu558) fused with N-terminal His tag was produced in E. coli cells.
Species	Mouse
Source	E.coli
ProteinLength	Leu308~Glu558
Description	<p>This gene encodes a member of the glucose phosphate isomerase protein family. The encoded protein has been identified as a moonlighting protein based on its ability to perform mechanistically distinct functions. In the cytoplasm, the gene product functions as a glycolytic enzyme (glucose-6-phosphate isomerase) that interconverts glucose-6-phosphate and fructose-6-phosphate. Extracellularly, the encoded protein (also referred to as neuroleukin) functions as a neurotrophic factor that promotes survival of skeletal motor neurons and sensory neurons, and as a lymphokine that induces immunoglobulin secretion. The encoded protein is also referred to as autocrine motility factor based on an additional function as a tumor-secreted cytokine and angiogenic factor.</p>
Form	Freeze-dried powder
Molecular Mass	27kDa as determined by SDS-PAGE reducing conditions
Endotoxin	<1.0EU per 1g (determined by the LAL method)

 Tel: 1-631-559-9269 1-516-512-3133

 Email: info@creative-biomart.com  Fax: 1-631-938-8127

 45-1 Ramsey Road, Shirley, NY 11967, USA

Purity	>95%
Characteristic	The isoelectric point is 7.8.
Applications	SDS-PAGE; WB; ELISA; IP; CoIP; Purification; Amine Reactive Labeling.
Stability	The thermal stability is described by the loss rate. The loss rate was determined by accelerated thermal degradation test, that is, incubate the protein at 37°C for 48h, and no obvious degradation and precipitation were observed. The loss rate is less than 5% within the expiration date under appropriate storage condition.
Storage	Avoid repeated freeze/thaw cycles. Store at 2-8°C for one month. Aliquot and store at -80°C for 12 months.
Concentration	200g/mL
Storage buffer	20mM Tris, 150mM NaCl, pH8.0, containing 1mM EDTA, 1mM DTT, 0.01% sarcosyl, 5%Trehalose and Proclin300
Reconstitution	Reconstitute in 20mM Tris, 150mM NaCl (pH8.0) to a concentration of 0.1-1.0 mg/mL. Do not vortex.

GENE INFORMATION

Gene Name	Gpi1 glucose phosphate isomerase 1 [<i>Mus musculus</i> (house mouse)]
Official Symbol	Gpi1
Synonyms	MF; NK; Amf; Gpi; Nlk; Org; Pgi; Phi; Gpi-1; Gpi1s; Gpi-1r; Gpi-1s; Gpi-1t; Gpi1-r; Gpi1-s; Gpi1-t; NK/GPI; autocrine motility factor; glucose phosphate isomerase 1 complex; glucose phosphate isomerase 1, regulatory; glucose phosphate isomerase

 Tel: 1-631-559-9269 1-516-512-3133

 Email: info@creative-biomart.com  Fax: 1-631-938-8127

 45-1 Ramsey Road, Shirley, NY 11967, USA

1, structural; glucose phosphate isomerase 1, temporal; maturation factor; neuroleukin; phosphoglucose isomerase; phosphohexose isomerase; glucose-6-phosphate isomerase

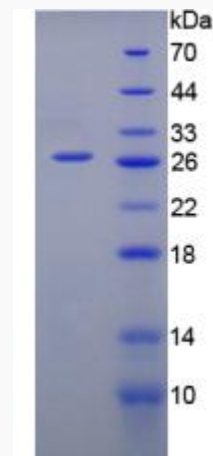
Gene ID 14751

mRNA Refseq NM_008155.4

Protein Refseq NP_032181.2

UniProt ID P06745

SDS-PAGE



 Tel: 1-631-559-9269 1-516-512-3133

 Email: info@creative-biomart.com  Fax: 1-631-938-8127

 45-1 Ramsey Road, Shirley, NY 11967, USA