

Recombinant Mouse Gpr146 Full Length Transmembrane protein, His-tagged

Cat. No. Gpr146-1486M Lot. No. (See product label)

SPECIFICATION

Product Overview	Recombinant Mouse Gpr146 protein(Q99LE2)(1-333aa), fused to N-terminal His tag, was expressed in E. coli.
Species	Mouse
Source	E.coli
ProteinLength	1-333aa
Form	If the delivery form is liquid, the default storage buffer is Tris/PBS-based buffer, 5%-50% glycerol. If the delivery form is lyophilized powder, the buffer before lyophilization is Tris/PBS-based buffer, 6% Trehalose, pH 8.0.
Molecular Mass	39.4 kDa
AA Sequence	MWSCGPLNSTAWAEEPLCRNLRGLWVLSLLYLGAGVPVSLGYNALLVLANLASKN TMTMPDVYFVNMAVAGLVLTALAPAYLLGPAHSRWALWLSSEAHVTLILFNVASL VTMYSTALLSLDYIERALPRTYMASVYNTRHVCGFVWGGAVLTSFSSLLFYICSHV SSRIAECARMQNTEAADAILVLIGYVVPGLAVLYALALISRIGKEDTPLDQDTSRLDPS VHRLLVATVCTQFGLWTPYYLSLGHVTLTSRGRVTEGHYLGILQVAKDLAKFLAFSS SSVTPLLYRYINKAFPGKLRRLMKKMHCGRRHCSPPSGIQQVMAQA
Purity	Greater than 85% as determined by SDS-PAGE.

 Tel: 1-631-559-9269 1-516-512-3133

 Email: info@creative-biomart.com  Fax: 1-631-938-8127

 45-1 Ramsey Road, Shirley, NY 11967, USA

Storage Store at -20°C/-80°C upon receipt, aliquoting is necessary for mutiple use. Avoid repeated freeze-thaw cycles.

Reconstitution Please reconstitute protein in deionized sterile water to a concentration of 0.1-1.0 mg/mL. We recommend to add 5-50% of glycerol (final concentration) and aliquot for long-term storage at -20°C/-80°C. Our default final concentration of glycerol is 50%.

GENE INFORMATION

Gene Name [Gpr146 G protein-coupled receptor 146 \[Mus musculus \]](#)

Official Symbol [Gpr146](#)

Synonyms GPR146; G protein-coupled receptor 146; probable G-protein coupled receptor 146; PGR8; BC003323; MGC7035;

Gene ID [80290](#)

mRNA Refseq [NM_001038703](#)

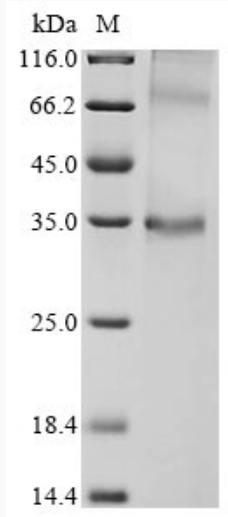
Protein Refseq [NP_001033792](#)

 Tel: 1-631-559-9269 1-516-512-3133

 Email: info@creative-biomart.com  Fax: 1-631-938-8127

 45-1 Ramsey Road, Shirley, NY 11967, USA

SDS-PAGE



 Tel: 1-631-559-9269 1-516-512-3133

 Email: info@creative-biomart.com  Fax: 1-631-938-8127

 45-1 Ramsey Road, Shirley, NY 11967, USA