

Recombinant Rat Grem1 Protein, His-tagged

Cat. No. Grem1-316R Lot. No. (See product label)

SPECIFICATION

Product Overview	Recombinant Rat Grem1(Lys25~Asp184) fused with His tag at N-terminal was expressed in E. coli.
Species	Rat
Source	E.coli
ProteinLength	Lys25~Asp184
Form	PBS, pH7.4, containing 0.01% SKL, 1mM DTT, 5% Trehalose and Proclin300.
Molecular Mass	22.1kDa
Endotoxin	<1.0EU per 1ug (determined by the LAL method)
Purity	> 95%
Applications	Positive Control; Immunogen; SDS-PAGE; WB. If bio-activity of the protein is needed, please check active protein
Stability	The thermal stability is described by the loss rate. The loss rate was determined by accelerated thermal degradation test, that is, incubate the protein at 37 centigrade for 48h, and no obvious degradation and precipitation were observed. The loss rate is less than 5% within the expiration date under appropriate storage condition.

 Tel: 1-631-559-9269 1-516-512-3133

 Email: info@creative-biomart.com  Fax: 1-631-938-8127

 45-1 Ramsey Road, Shirley, NY 11967, USA

Storage	Avoid repeated freeze/thaw cycles. Store at 2-8 centigrade for one month. Aliquot and store at -80 centigrade for 12 months.
----------------	--

Reconstitution	Reconstitute in PBS or others
-----------------------	-------------------------------

GENE INFORMATION

Gene Name	Grem1 gremlin 1 [Rattus norvegicus]
------------------	---------------------------------------

Official Symbol	Grem1
------------------------	-------

Synonyms	GREM1; gremlin 1; gremlin-1; gremlin 1 homolog, cysteine knot superfamily; cysteine knot superfamily 1, BMP antagonist 1; down-regulated in Mos-transformed cells protein; drm; Cktsf1b1;
-----------------	---

Gene ID	50566
----------------	-------

mRNA Refseq	NM_019282
--------------------	-----------

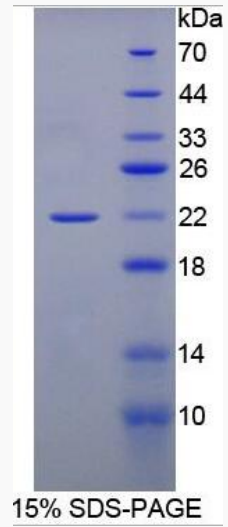
Protein Refseq	NP_062155
-----------------------	-----------

UniProt ID	O35793
-------------------	--------

 Tel: 1-631-559-9269 1-516-512-3133

 Email: info@creative-biomart.com  Fax: 1-631-938-8127

 45-1 Ramsey Road, Shirley, NY 11967, USA



 Tel: 1-631-559-9269 1-516-512-3133

 Email: info@creative-biomart.com  Fax: 1-631-938-8127

 45-1 Ramsey Road, Shirley, NY 11967, USA