

Recombinant Mouse Grem1 Protein

Cat. No. Grem1-7380M Lot. No. (See product label)

SPECIFICATION

Product Overview	Recombinant mouse Gremlin-1 / GREM1(aa. 160) without tag was expressed in E. coli.
Species	Mouse
Source	E.coli
Description	Cytokine that may play an important role during carcinogenesis and metanephric kidney organogenesis, as BMP a antagonist required for early limb outgrowth and patterning in maintaining the FGF4-SHH feedback loop. Down-regulates the BMP4 signaling in a dose-dependent manner. Antagonist of BMP2; inhibits BMP2-mediated differentiation of osteoblasts (in vitro). Acts as inhibitor of monocyte chemotaxis.
Form	Lyophilized
Molecular Mass	28 kDa
AA Sequence	MKKKGSQGAIPPPDKAQHNDSEQTQSPPQPGSRTRGRGQGRGTAMPGEEVLESS QEALHVTERKYLKRDWCKTQPLKQTIHEEGCNSRTIINRFCYGQCNSFYIPRHIRKEE GSFQSCSFCKPKKFTMMVTLNCPQLPPTKKKRVTTRVKQCRCSIDL
Endotoxin	< 0.1 ng/μg of Grem1
Purity	> 95 % by SDS-PAGE and Silver staining

 Tel: 1-631-559-9269 1-516-512-3133

 Email: info@creative-biomart.com  Fax: 1-631-938-8127

 45-1 Ramsey Road, Shirley, NY 11967, USA

Stability	Shelf life: one year from despatch.
Storage	The lyophilized protein is stable at room temperature for up to 1 week or at -20 centigrade for longer. Following reconstitution store (in aliquots) at -20 centigrade. Avoid repeated freezing and thawing.
Storage Buffer	50 mM acetic acid without stabilizer
Reconstitution	Mouse Grem1 should be reconstituted in 50 mM acetic acid or water to a concentration of 0.1 mg/mL. This solution can be diluted in water or other buffer solutions.

GENE INFORMATION

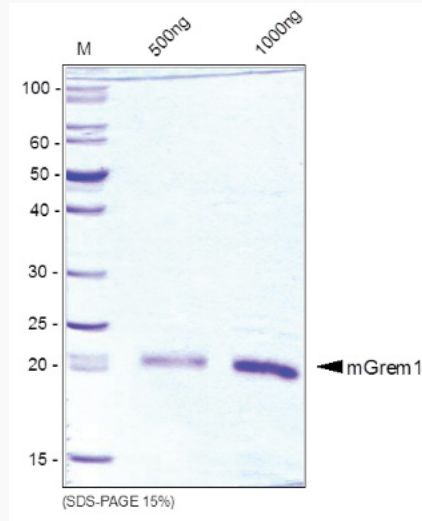
Gene Name	Grem1 gremlin 1, DAN family BMP antagonist [Mus musculus (house mouse)]
Official Symbol	Grem1
Synonyms	Grem1; gremlin 1, DAN family BMP antagonist; Dr; Id; Drm; gre; Grem; Cktsf1b; Cktsf1b1; gremlin-1; cysteine knot superfamily 1, BMP antagonist 1; down-regulated in Mos-transformed cells protein; down-regulated in v-mos-transformed cells
Gene ID	23892
mRNA Refseq	NM_011824
Protein Refseq	NP_035954
UniProt ID	O70326

 Tel: 1-631-559-9269 1-516-512-3133

 Email: info@creative-biomart.com  Fax: 1-631-938-8127

 45-1 Ramsey Road, Shirley, NY 11967, USA

SDS-PAGE



 Tel: 1-631-559-9269 1-516-512-3133

 Email: info@creative-biomart.com  Fax: 1-631-938-8127

 45-1 Ramsey Road, Shirley, NY 11967, USA