

Recombinant Mouse Gsdmd Protein, His-tagged

Cat. No. Gsdmd-1600M **Lot. No.** (See product label)

SPECIFICATION

Product Overview	Recombinant Mouse Gsdmd Protein (Met1-Gln325) with N-His tag was expressed in E. coli.
Species	Mouse
Source	E.coli
ProteinLength	Met1-Gln325
Description	Enables phospholipid binding activity and wide pore channel activity. Involved in several processes, including defense response to bacterium; positive regulation of interleukin-1 beta production; and protein-containing complex assembly. Acts upstream of or within cellular response to extracellular stimulus. Located in cytosol; extracellular space; and plasma membrane. Part of NLRP3 inflammasome complex. Is expressed in several structures, including gut; liver; lung; metanephros; and spleen. Orthologous to human GSDMD (gasdermin D).
Form	Freeze-dried powder
Molecular Mass	Predicted Molecular Mass: 39.5 kDa Accurate Molecular Mass: 40 kDa
Purity	> 95%
Applications	Positive Control; Immunogen; SDS-PAGE; WB.

 Tel: 1-631-559-9269 1-516-512-3133

 Email: info@creative-biomart.com  Fax: 1-631-938-8127

 45-1 Ramsey Road, Shirley, NY 11967, USA

Stability	The thermal stability is described by the loss rate. The loss rate was determined by accelerated thermal degradation test, that is, incubate the protein at 37 centigrade for 48h, and no obvious degradation and precipitation were observed. The loss rate is less than 5% within the expiration date under appropriate storage condition.
Storage	Avoid repeated freeze/thaw cycles. Store at 2-8 centigrade for one month. Aliquot and store at -80 centigrade for 12 months.
Storage Buffer	20mM Tris, 150mM NaCl, pH8.0, containing 1mM EDTA, 1mM DTT, 0.01% SKL, 5% Trehalose and Proclin300.
Reconstitution	Reconstitute in 10mM PBS (pH7.4) to a concentration of 0.1-1.0 mg/mL. Do not vortex.

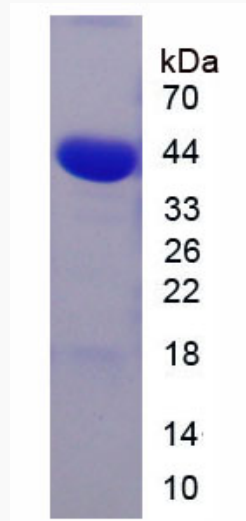
GENE INFORMATION

Gene Name	Gsdmd gasdermin D [<i>Mus musculus</i> (house mouse)]
Official Symbol	Gsdmd
Synonyms	GSDMD; gasdermin D; gasdermin-D; gasdermin domain containing 1; gasdermin domain-containing protein 1; DF5L; M2-4; Dfna5l; Gsdmdc1; AW558049; 1810036L03Rik;
Gene ID	69146
mRNA Refseq	NM_026960
Protein Refseq	NP_081236
UniProt ID	Q9D8T2

 Tel: 1-631-559-9269 1-516-512-3133

 Email: info@creative-biomart.com  Fax: 1-631-938-8127

 45-1 Ramsey Road, Shirley, NY 11967, USA



 Tel: 1-631-559-9269 1-516-512-3133

 Email: info@creative-biomart.com  Fax: 1-631-938-8127

 45-1 Ramsey Road, Shirley, NY 11967, USA