

Recombinant Rat Gsdmd Protein, His-tagged

Cat. No. Gsdmd-1601R Lot. No. (See product label)

SPECIFICATION

Product Overview	Recombinant Rat Gsdmd Protein (Met1-Pro326) with N-His tag was expressed in E. coli.
Species	Rat
Source	E.coli
ProteinLength	Met1-Pro326
Description	Predicted to enable phospholipid binding activity and wide pore channel activity. Predicted to be involved in several processes, including defense response to bacterium; positive regulation of interleukin-1 beta production; and protein-containing complex assembly. Predicted to act upstream of or within cellular response to extracellular stimulus. Predicted to be located in several cellular components, including cytosol; extracellular space; and nucleoplasm. Predicted to be part of NLRP3 inflammasome complex. Orthologous to human GSDMD (gasdermin D).
Form	Freeze-dried powder
Molecular Mass	Predicted Molecular Mass: 39.5 kDa Accurate Molecular Mass: 40 kDa
Purity	> 90%
Applications	Positive Control; Immunogen; SDS-PAGE; WB.

 Tel: 1-631-559-9269 1-516-512-3133

 Email: info@creative-biomart.com  Fax: 1-631-938-8127

 45-1 Ramsey Road, Shirley, NY 11967, USA

Stability	The thermal stability is described by the loss rate. The loss rate was determined by accelerated thermal degradation test, that is, incubate the protein at 37 centigrade for 48h, and no obvious degradation and precipitation were observed. The loss rate is less than 5% within the expiration date under appropriate storage condition.
Storage	Avoid repeated freeze/thaw cycles. Store at 2-8 centigrade for one month. Aliquot and store at -80 centigrade for 12 months.
Storage Buffer	20mM Tris, 150mM NaCl, pH8.0, containing 1mM EDTA, 1mM DTT, 0.01% SKL, 5% Trehalose and Proclin300.
Reconstitution	Reconstitute in 20mM Tris, 150mM NaCl (pH8.0) to a concentration of 0.1-1.0 mg/mL. Do not vortex.

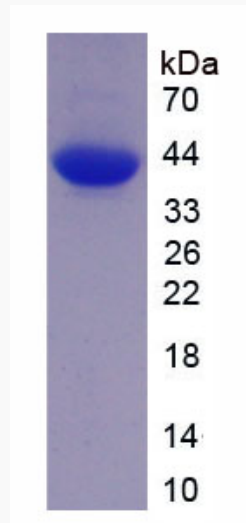
GENE INFORMATION

Gene Name	Gsdmd gasdermin D [<i>Rattus norvegicus</i> (Norway rat)]
Official Symbol	Gsdmd
Synonyms	GSDMD; gasdermin D; gasdermin-D; gasdermin domain containing 1; Gsdmdc1;
Gene ID	315084
mRNA Refseq	NM_001130553
Protein Refseq	NP_001124025
UniProt ID	A0A096MJ11

 Tel: 1-631-559-9269 1-516-512-3133

 Email: info@creative-biomart.com  Fax: 1-631-938-8127

 45-1 Ramsey Road, Shirley, NY 11967, USA



Tel: 1-631-559-9269 1-516-512-3133

Email: info@creative-biomart.com Fax: 1-631-938-8127

45-1 Ramsey Road, Shirley, NY 11967, USA