

Recombinant Mouse Gsta4 protein, His-tagged

Cat. No. Gsta4-738M Lot. No. (See product label)

SPECIFICATION

Product Overview	Recombinant Mouse Gsta4 aa. (Met1~Phe222 (Accession # P24472)) fused with N-terminal His tag was produced in E. coli cells.
Species	Mouse
Source	E.coli
ProteinLength	Met1~Phe222
Description	Conjugation of reduced glutathione to a wide number of exogenous and endogenous hydrophobic electrophiles.
Form	Freeze-dried powder
Molecular Mass	Predicted Molecular Mass: 26.8kDa
Endotoxin	<1.0EU per 1g (determined by the LAL method)
Purity	>95%
Characteristic	The isoelectric point is 7.1.
Applications	SDS-PAGE; WB; ELISA; IP.
Stability	The thermal stability is described by the loss rate. The loss rate was determined by

 Tel: 1-631-559-9269 1-516-512-3133

 Email: info@creative-biomart.com  Fax: 1-631-938-8127

 45-1 Ramsey Road, Shirley, NY 11967, USA

accelerated thermal degradation test, that is, incubate the protein at 37°C for 48h, and no obvious degradation and precipitation were observed. The loss rate is less than 5% within the expiration date under appropriate storage condition.

Storage

Avoid repeated freeze/thaw cycles. Store at 2-8°C for one month. Aliquot and store at -80°C for 12 months.

Storage buffer

Supplied as lyophilized form in PBS, pH7.4, containing 5% sucrose, 0.01% sarcosyl.

Reconstitution

Reconstitute in sterile PBS, pH7.2-pH7.4.

GENE INFORMATION

Gene Name

[Gsta4 glutathione S-transferase, alpha 4 \[Mus musculus \(house mouse\) \]](#)

Official Symbol

[Gsta4](#)

Synonyms

GST5.7; mGsta4; GST A4-4; GST class-alpha member 4; GSTA4-4; glutathione S-transferase 5.7; glutathione S-transferase A4

Gene ID

[14860](#)

mRNA Refseq

[NM_010357.3](#)

Protein Refseq

[NP_034487.2](#)

UniProt ID

[P24472](#)

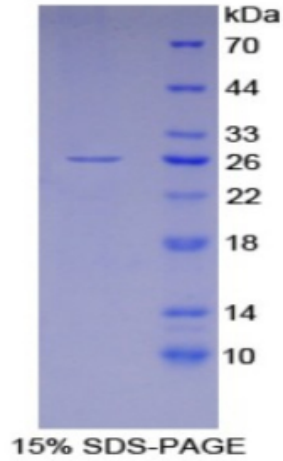
 Tel: 1-631-559-9269 1-516-512-3133

 Email: info@creative-biomart.com  Fax: 1-631-938-8127

 45-1 Ramsey Road, Shirley, NY 11967, USA



SDS-PAGE



Tel: 1-631-559-9269 1-516-512-3133

Email: info@creative-biomart.com Fax: 1-631-938-8127

45-1 Ramsey Road, Shirley, NY 11967, USA