

## Recombinant Rat Gstm1 protein, His-tagged

**Cat. No.** Gstm1-567R    **Lot. No.** (See product label)

### SPECIFICATION

<b>Product Overview</b>	Recombinant Rat Gstm1 (P04905) aa. (Met1~Lys218) fused with His tag was produced in E. coli cells.
<b>Species</b>	Rat
<b>Source</b>	E.coli
<b>ProteinLength</b>	Met1~Lys218
<b>Description</b>	A multifunctional enzyme thought to have scavenger function; able to neutralize harmful metabolites from foreign substances.
<b>Form</b>	Freeze-dried powder
<b>Molecular Mass</b>	Predicted Molecular Mass: 27.2kDa; Accurate Molecular Mass: 27kDa as determined by SDS-PAGE reducing conditions.
<b>Purity</b>	>95%
<b>Characteristic</b>	Isoelectric point is 8.3.
<b>Applications</b>	Cell culture; Activity Assays.
<b>Stability</b>	The thermal stability is described by the loss rate. The loss rate was determined by accelerated thermal degradation test, that is, incubate the protein at 37°C for 48h,

 Tel: 1-631-559-9269    1-516-512-3133

 Email: [info@creative-biomart.com](mailto:info@creative-biomart.com)     Fax: 1-631-938-8127

 45-1 Ramsey Road, Shirley, NY 11967, USA

and no obvious degradation and precipitation were observed. The loss rate is less than 5% within the expiration date under appropriate storage condition.

**Storage**

Avoid repeated freeze/thaw cycles. Store at 2-8°C for one month. Aliquot and store at -80°C for 12 months.

**Storage buffer**

20mM Tris, 150mM NaCl, pH8.0, containing 1mM EDTA, 1mM DTT, 0.01% sarcosyl, 5% Trehalose and Proclin300.

**Reconstitution**

Reconstitute in 20mM Tris, 150mM NaCl (pH8.0) to a concentration of 0.1-1.0 mg/mL. Do not vortex

## GENE INFORMATION

**Gene Name**

[Gstm1 glutathione S-transferase mu 1 \[ Rattus norvegicus \(Norway rat\) \]](#)

**Official Symbol**

[Gstm1](#)

**Synonyms**

Gstm1; glutathione S-transferase mu 1; GSTA3; glutathione S-transferase Mu 1; GST 3-3; GST Yb1; GSTM1-1; glutathione S-transferase M1; glutathione S-transferase Yb-1 subunit; glutathione-S-transferase, mu type 1 (Yb1)

**Gene ID**

[24423](#)

**mRNA Refseq**

[NM\\_017014.1](#)

**Protein Refseq**

[NP\\_058710.1](#)

**UniProt ID**

[P04905](#)

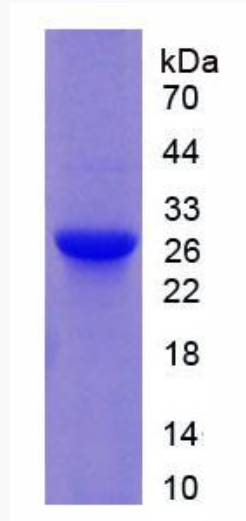
 Tel: 1-631-559-9269 1-516-512-3133

 Email: [info@creative-biomart.com](mailto:info@creative-biomart.com)  Fax: 1-631-938-8127

 45-1 Ramsey Road, Shirley, NY 11967, USA



SDS-PAGE



Tel: 1-631-559-9269 1-516-512-3133

Email: [info@creative-biomart.com](mailto:info@creative-biomart.com) Fax: 1-631-938-8127

45-1 Ramsey Road, Shirley, NY 11967, USA