

Recombinant Mouse Gstm1 protein, His-sumostar-tagged

Cat. No. Gstm1-6444M Lot. No. (See product label)

SPECIFICATION

Product Overview	Recombinant Mouse Gstm1 protein(P10649)(2-218aa), fused with N-terminal His and sumostar tag, was expressed in Yeast.
Species	Mouse
Source	Yeast
ProteinLength	2-218aa
Tag	N-His-sumostar
Form	If the delivery form is liquid, the default storage buffer is Tris/PBS-based buffer, 5%-50% glycerol. If the delivery form is lyophilized powder, the buffer before lyophilization is Tris/PBS-based buffer, 6% Trehalose, pH 8.0.
Molecular Mass	38.9 kDa
Purity	Greater than 90% as determined by SDS-PAGE.
Storage	Store at -20°C/-80°C upon receipt, aliquoting is necessary for mutiple use. Avoid repeated freeze-thaw cycles.
Reconstitution	We recommend that this vial be briefly centrifuged prior to opening to bring the contents to the bottom. Please reconstitute protein in deionized sterile water to a concentration of 0.1-1.0 mg/mL. We recommend to add 5-50% of glycerol (final

 Tel: 1-631-559-9269 1-516-512-3133

 Email: info@creative-biomart.com  Fax: 1-631-938-8127

 45-1 Ramsey Road, Shirley, NY 11967, USA

concentration) and aliquot for long-term storage at -20°C/-80°C.

AA Sequence

PMILGYWNVRGLTHPIRMLLEYTDSSYDEKRYTMGDAPDFDRSQWLNEKFKLGLDF
 PNLPLYLIDGSHKITQSNAILRYLARKHHLDGETEEERIRADIVENQVMDTRMQLIMLCY
 NPDFEKQKPEFLKTIPEKMKLYSEFLGKRPWFAGDKVTYVDFLAYDILDQYRMFEPK
 CLDAFPNLRDFLARFEGLKKISAYMKSSRYIATPIFSKMAHWSNK

GENE INFORMATION

Gene Name [Gstm1 glutathione S-transferase, mu 1 \[Mus musculus \]](#)

Official Symbol [Gstm1](#)

Synonyms GSTM1; glutathione S-transferase, mu 1; glutathione S-transferase Mu 1; pmGT10; GST 1-1; GST class-mu 1; glutathione S-transferase GT8.7; glutathione-S-transferase, mu 1; Gstb1; Gstb-1;

Gene ID [14862](#)

mRNA Refseq [NM_010358](#)

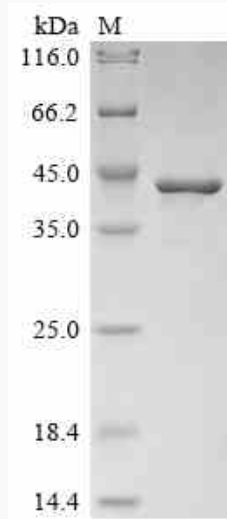
Protein Refseq [NP_034488](#)

 Tel: 1-631-559-9269 1-516-512-3133

 Email: info@creative-biomart.com  Fax: 1-631-938-8127

 45-1 Ramsey Road, Shirley, NY 11967, USA

SDS-PAGE



 Tel: 1-631-559-9269 1-516-512-3133

 Email: info@creative-biomart.com  Fax: 1-631-938-8127

 45-1 Ramsey Road, Shirley, NY 11967, USA