

## Recombinant Mouse Gstm1 Protein

**Cat. No.** Gstm1-7220M    **Lot. No.** (See product label)

### SPECIFICATION

<b>Product Overview</b>	Recombinant mouse GSTM1 protein without tag was expressed in E. coli and purified by using conventional chromatography techniques.
<b>Species</b>	Mouse
<b>Source</b>	E.coli
<b>ProteinLength</b>	1-218
<b>Description</b>	Conjugation of reduced glutathione to a wide number of exogenous and endogenous hydrophobic electrophiles.
<b>Form</b>	Liquid
<b>Molecular Mass</b>	25.9 kDa
<b>AA Sequence</b>	MPMILGYWNVRGLTHPIRMLLEYTDSSYDEKRYTMGDAPDFDRSQWLNEKFKLGLD FPNLPYLIDGSHKITQSNAILRYLARKHHLDGETEEERIRADIVENQVMDTRMQLIMLC YNPDFEKQKPEFLKTIPEKMKLYSEFLGKRPWFAGDKVITYVDFLAYDILDQYRMFEP KCLDAFPNLRDFLARFEGGLKKISAYMKSSRYIATPIFSKMAHWSNK
<b>Endotoxin</b>	< 1.0 EU/μg of protein (determined by LAL method)
<b>Purity</b>	> 95 % by SDS-PAGE

 Tel: 1-631-559-9269    1-516-512-3133

 Email: [info@creative-biomart.com](mailto:info@creative-biomart.com)     Fax: 1-631-938-8127

 45-1 Ramsey Road, Shirley, NY 11967, USA

<b>Stability</b>	Shelf life: one year from despatch.
<b>Storage</b>	Store undiluted at 2-8 centigrade for up to two weeks or (in aliquots) at -20 or -70 centigrade for longer. Avoid repeated freezing and thawing.
<b>Concentration</b>	1.0 mg/mL (determined by Bradford assay)
<b>Storage Buffer</b>	PBS (pH 7.4) containing 5 mM glutathione

## GENE INFORMATION

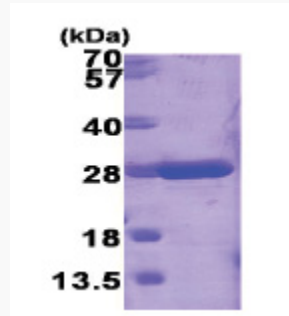
<b>Gene Name</b>	<a href="#">Gstm1 glutathione S-transferase, mu 1 [ Mus musculus (house mouse) ]</a>
<b>Official Symbol</b>	<a href="#">Gstm1</a>
<b>Synonyms</b>	Gstm1; glutathione S-transferase, mu 1; Gstb; Gstb-; Gstb1; Gstb-1; glutathione S-transferase Mu 1; GST 1-1; GST class-mu 1; glutathione S-transferase GT8.7; pmGT10; EC 2.5.1.18
<b>Gene ID</b>	<a href="#">14862</a>
<b>mRNA Refseq</b>	<a href="#">NM_010358</a>
<b>Protein Refseq</b>	<a href="#">NP_034488</a>
<b>UniProt ID</b>	<a href="#">P10649</a>

 Tel: 1-631-559-9269 1-516-512-3133

 Email: [info@creative-biomart.com](mailto:info@creative-biomart.com)  Fax: 1-631-938-8127

 45-1 Ramsey Road, Shirley, NY 11967, USA

**SDS-PAGE**



 Tel: 1-631-559-9269 1-516-512-3133

 Email: [info@creative-biomart.com](mailto:info@creative-biomart.com)  Fax: 1-631-938-8127

 45-1 Ramsey Road, Shirley, NY 11967, USA