

Recombinant Mouse Gypa protein, hFc-tagged

Cat. No. Gypa-3533M **Lot. No.** (See product label)

SPECIFICATION

Product Overview	Recombinant Mouse Gypa protein(P14220)(Met1-Val108), fused with C-terminal hFc tag, was expressed in HEK293.
Species	Mouse
Source	HEK293
ProteinLength	Met1-Val108
Tag	C-hFc
Form	Supplied as 0.22µm filtered solution in PBS (pH 7.4).
Molecular Mass	The protein has a predicted MW of 38.1 kDa. Due to glycosylation, the protein migrates to 68-75 kDa based on Tris-Bis PAGE result.
Endotoxin	Less than 1EU per µg by the LAL method.
Purity	> 95% as determined by Tris-Bis PAGE;> 95% as determined by HPLC
Storage	Valid for 12 months from date of receipt when stored at -80°C. Recommend to aliquot the protein into smaller quantities for optimal storage. Please do not repeated freeze-thaw cycles.
Reconstitution	It is recommended that sterile water be added to the vial to prepare a stock solution of

 Tel: 1-631-559-9269 1-516-512-3133

 Email: info@creative-biomart.com  Fax: 1-631-938-8127

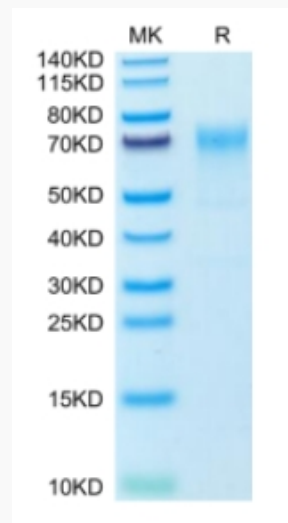
 45-1 Ramsey Road, Shirley, NY 11967, USA

0.2 ug/ul. Centrifuge the vial at 4°C before opening to recover the entire contents.

GENE INFORMATION

Gene Name	Gypa glycophorin A [<i>Mus musculus</i>]
Official Symbol	Gypa
Synonyms	GYPA; glycophorin A; glycophorin-A; GPA; CD235a; AI853584;
Gene ID	14934
mRNA Refseq	NM_010369
Protein Refseq	NP_034499

Tris-Bis PAGE



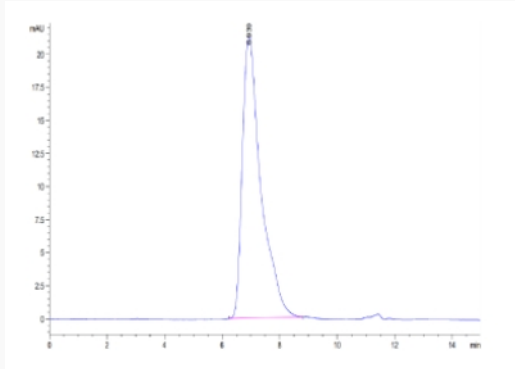
Tel: 1-631-559-9269 1-516-512-3133

Email: info@creative-biomart.com Fax: 1-631-938-8127

45-1 Ramsey Road, Shirley, NY 11967, USA



SEC-HPLC



Tel: 1-631-559-9269 1-516-512-3133

Email: info@creative-biomart.com Fax: 1-631-938-8127

45-1 Ramsey Road, Shirley, NY 11967, USA