

Recombinant Mouse Gzma protein, His-tagged

Cat. No. Gzma-2633M Lot. No. (See product label)

SPECIFICATION

Product Overview	Recombinant Mouse Gzma aa. (Ile29~Val260) fused with N-terminal His tag was produced in E. coli cells.
Species	Mouse
Source	E.coli
ProteinLength	Ile29~Val260
Form	Freeze-dried powder
Molecular Mass	29kDa as determined by SDS-PAGE reducing conditions.
Endotoxin	<1.0EU per 1g (determined by the LAL method)
Purity	>95%
Characteristic	The isoelectric point is 9.4.
Applications	Positive Control; Immunogen; SDS-PAGE; WB
Stability	The thermal stability is described by the loss rate. The loss rate was determined by accelerated thermal degradation test, that is, incubate the protein at 37°C for 48h, and no obvious degradation and precipitation were observed. The loss rate is less than 5% within the expiration date under appropriate storage condition.

 Tel: 1-631-559-9269 1-516-512-3133

 Email: info@creative-biomart.com  Fax: 1-631-938-8127

 45-1 Ramsey Road, Shirley, NY 11967, USA

Storage	Avoid repeated freeze/thaw cycles. Store at 2-8°C for one month. Aliquot and store at -80°C for 12 months.
Concentration	200g/mL
Storage buffer	PBS, pH7.4, containing 1mM DTT, 5% trehalose, 0.01% sarcosyl and Proclin300
Reconstitution	Reconstitute in PBS (pH7.4) to a concentration of 0.1-1.0 mg/mL. Do not vortex.

GENE INFORMATION

Gene Name	Gzma granzyme A [<i>Mus musculus</i> (house mouse)]
Official Symbol	Gzma
Synonyms	Gzma; granzyme A; Hf; Hf1; SE1; TSP1; Ctla3; TSP-1; Ctla-3; AW494114; granzyme A; BLT esterase; H factor; Hanukah factor; autocrine thymic lymphoma granzyme-like serine protease; fragmentin-1; serine esterase 1; t cell-specific serine protease 1
Gene ID	14938
mRNA Refseq	NM_010370.2
Protein Refseq	NP_034500.1
UniProt ID	P11032

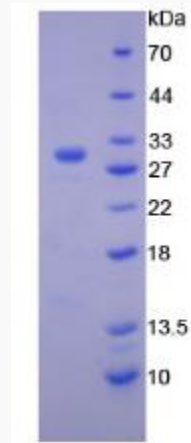
 Tel: 1-631-559-9269 1-516-512-3133

 Email: info@creative-biomart.com  Fax: 1-631-938-8127

 45-1 Ramsey Road, Shirley, NY 11967, USA



SDS-PAGE



Tel: 1-631-559-9269 1-516-512-3133

Email: info@creative-biomart.com Fax: 1-631-938-8127

45-1 Ramsey Road, Shirley, NY 11967, USA