

Recombinant Mouse Gzmd Protein (Ile21-Leu252), C-His tagged

Cat. No. Gzmd-5420M Lot. No. (See product label)

SPECIFICATION

| | |
|-------------------------|---|
| Product Overview | Recombinant mouse Gzmd (Ile21-Leu252) fused with the C-terminal His tag was expressed in mammalian cells. |
| Species | Mouse |
| Source | Mammalian Cells |
| ProteinLength | Ile21-Leu252 |
| Description | Predicted to enable serine-type endopeptidase activity. Predicted to be involved in several processes, including granzyme-mediated programmed cell death signaling pathway; natural killer cell mediated cytotoxicity; and pyroptosis. Predicted to act upstream of or within cytolysis. Predicted to be located in cytolytic granule. Predicted to be active in cytoplasm and intracellular membrane-bounded organelle. Is expressed in extraembryonic component and placenta. Orthologous to human GZMB (granzyme B). |
| Form | Lyophilized powder/frozen liquid |
| Molecular Mass | 25.52 kDa |
| Purity | > 90 % as determined by SDS-PAGE |
| Notes | For research use only. |

 Tel: 1-631-559-9269 1-516-512-3133

 Email: info@creative-biomart.com  Fax: 1-631-938-8127

 45-1 Ramsey Road, Shirley, NY 11967, USA

| | |
|-----------------------|---|
| Storage | Use a manual defrost freezer and avoid repeated freeze thaw cycles. Store at 2 to 8 centigrade for one week. Store at -20 to -80 centigrade for twelve months from the date of receipt. |
| Storage Buffer | Supplied as solution form in PBS or lyophilized from PBS. |
| Reconstitution | Reconstitute in sterile water for a stock solution. |
| Shipping | They are shipped out with dry ice/blue ice unless customers require otherwise. |

GENE INFORMATION

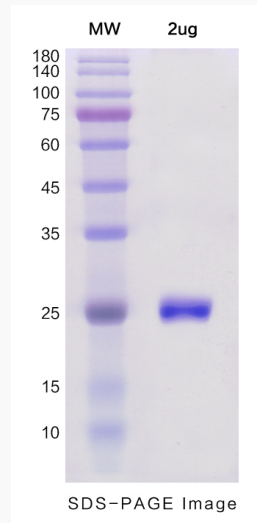
| | |
|------------------------|---|
| Gene Name | Gzmd granzyme D [<i>Mus musculus</i> (house mouse)] |
| Official Symbol | Gzmd |
| Synonyms | Gzmd; granzyme D; CCP5; Ctla5; Ctla-5 |
| Gene ID | 14941 |
| mRNA Refseq | NM_010372 |
| Protein Refseq | NP_034502 |
| UniProt ID | P11033 |

 Tel: 1-631-559-9269 1-516-512-3133

 Email: info@creative-biomart.com  Fax: 1-631-938-8127

 45-1 Ramsey Road, Shirley, NY 11967, USA

SDS-PAGE



 Tel: 1-631-559-9269 1-516-512-3133

 Email: info@creative-biomart.com  Fax: 1-631-938-8127

 45-1 Ramsey Road, Shirley, NY 11967, USA