

Recombinant Mouse Gzmm Protein, His/GST-tagged

Cat. No. Gzmm-651M Lot. No. (See product label)

SPECIFICATION

Product Overview	Recombinant Mouse Gzmm(Arg31~Arg257) fused with His/GST tag at N-terminal was expressed in E. coli.
Species	Mouse
Source	E.coli
ProteinLength	Arg31~Arg257
Description	The protein encoded by this gene is a member of a family of cytotoxic lymphocyte serine proteases called granzymes, which are expressed by cytotoxic T lymphocytes and natural killer cells. This protein belongs to a subfamily of granzymes that cleave after methionine residues. Natural killer cell development, homeostasis and cytotoxicity are normal in mice deficient for this gene, but they demonstrate increased susceptibility to murine cytomegalovirus. Alternative splicing results in multiple transcript variants.
Form	PBS, pH7.4, containing 0.01% SKL, 1mM DTT, 5% Trehalose and Proclin300.
Molecular Mass	57.0kDa
Identity	Reconstitute in 10mM PBS (pH7.4) to a concentration of 0.1-1.0 mg/mL. Do not vortex.
Endotoxin	<1.0EU per 1g (determined by the LAL method)

 Tel: 1-631-559-9269 1-516-512-3133

 Email: info@creative-biomart.com  Fax: 1-631-938-8127

 45-1 Ramsey Road, Shirley, NY 11967, USA

Purity	> 95%
Applications	Positive Control; Immunogen; SDS-PAGE; WB. If bio-activity of the protein is needed, please check active protein
Stability	The thermal stability is described by the loss rate. The loss rate was determined by accelerated thermal degradation test, that is, incubate the protein at 37 centigrade for 48h, and no obvious degradation and precipitation were observed. The loss rate is less than 5% within the expiration date under appropriate storage condition.
Storage	Avoid repeated freeze/thaw cycles. Store at 2-8 centigrade for one month. Aliquot and store at -80 centigrade for 12 months.
Reconstitution	Reconstitute in PBS or others

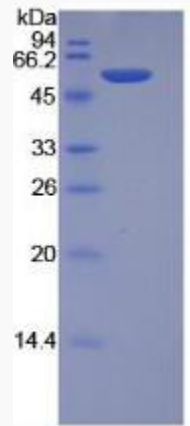
GENE INFORMATION

Gene Name	Gzmm granzyme M (lymphocyte met-ase 1) [<i>Mus musculus</i>]
Official Symbol	Gzmm
Synonyms	GZMM; granzyme M (lymphocyte met-ase 1); granzyme M; lymphocyte Met-ase 1; Lmet1; MMET-1;
Gene ID	16904
mRNA Refseq	NM_008504
Protein Refseq	NP_032530

 Tel: 1-631-559-9269 1-516-512-3133

 Email: info@creative-biomart.com  Fax: 1-631-938-8127

 45-1 Ramsey Road, Shirley, NY 11967, USA



Tel: 1-631-559-9269 1-516-512-3133

Email: info@creative-biomart.com Fax: 1-631-938-8127

45-1 Ramsey Road, Shirley, NY 11967, USA