

## Native Bovine H1F0 Protein

Cat. No. H1F0-01B Lot. No. (See product label)

### SPECIFICATION

<b>Product Overview</b>	Native Bovine H1F0 Protein purified from Calf thymus.
<b>Species</b>	Bovine
<b>Source</b>	Thymus
<b>ProteinLength</b>	1-213 (H1.2), 1-221 (H1.3), and 1-219 (H1.4)
<b>Description</b>	Histone H1 is a nuclear protein that interacts with linker DNA regions between nucleosomes to provide nucleosome core structure stabilization.
<b>Molecular Mass</b>	21.3 (H1.2), 22.1 (H1.3), and 21.9 (H1.4) kDa
<b>Purity</b>	≥ 80% estimated by SDS-PAGE
<b>Applications</b>	Enzyme activity assays, as well as for Western blot (WB) applications.
<b>Stability</b>	≥ 1 year
<b>Storage</b>	At -80 centigrade.
<b>Storage Buffer</b>	A solution in water (frozen)
<b>Shipping</b>	Dry ice in continental US; may vary elsewhere

 Tel: 1-631-559-9269 1-516-512-3133

 Email: [info@creative-biomart.com](mailto:info@creative-biomart.com)  Fax: 1-631-938-8127

 45-1 Ramsey Road, Shirley, NY 11967, USA

## GENE INFORMATION

**Gene Name** H1-2 H1.2 linker histone, cluster member [ *Bos taurus* (cattle) ]

**Official Symbol** H1-2

**Synonyms** H1-2; H1.2 linker histone, cluster member; HIST1H1C; histone H1.2; CTL-1; histone H1.1; histone H1d; histone cluster 1, H1c; H1-3; H1.3 linker histone, cluster member; HIST1H1D; H1.4 linker histone, cluster member; H1-4

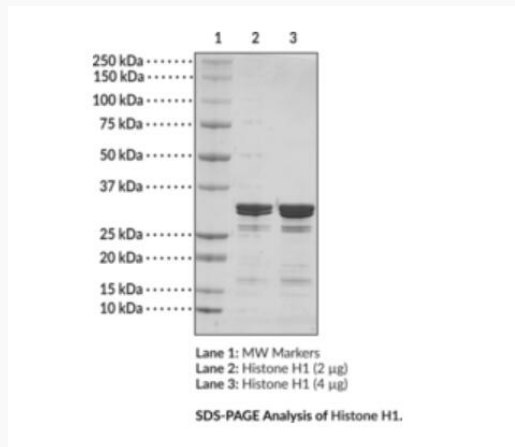
**Gene ID** 513971

**mRNA Refseq** NM\_001083425

**Protein Refseq** NP\_001076894

**UniProt ID** P02253

### SDS-PAGE



Tel: 1-631-559-9269 1-516-512-3133

Email: [info@creative-biomart.com](mailto:info@creative-biomart.com) Fax: 1-631-938-8127

45-1 Ramsey Road, Shirley, NY 11967, USA