

Recombinant Human H1FX Protein, GST-tagged

Cat. No. H1FX-4531H **Lot. No.** (See product label)

SPECIFICATION

Product Overview	Human H1FX full-length ORF (NP_006017.1, 1 a.a. - 213 a.a.) recombinant protein with GST-tag at N-terminal.
Species	Human
Source	Wheat Germ
Description	Histones are basic nuclear proteins that are responsible for the nucleosome structure of the chromosomal fiber in eukaryotes. Nucleosomes consist of approximately 146 bp of DNA wrapped around a histone octamer composed of pairs of each of the four core histones (H2A, H2B, H3, and H4). The chromatin fiber is further compacted through the interaction of a linker histone, H1, with the DNA between the nucleosomes to form higher order chromatin structures. This gene encodes a member of the histone H1 family. [provided by RefSeq]
Molecular Mass	48.9 kDa
AA Sequence	MSVELEEALPVTTAEGMAKKVTKAGGSAALSPSKKRKNSKKNQPGKYSQLVVETI RRLGERNGSSLAKIYTEAKKVPWFDDQQNGRTYLYKYSIKALVQNDTLLQVKGTGANG SFKLNRRKKLEGGGERRGAPAAATAPAPTAHKAKKAAPGAAGSRRADKKPARGQKP EQRSHKKGAGAKKDKGGKAKKTAAGGKKVKKAAKPSVPKVPKGRK
Applications	Enzyme-linked Immunoabsorbent Assay Western Blot (Recombinant protein) Antibody Production

 Tel: 1-631-559-9269 1-516-512-3133

 Email: info@creative-biomart.com  Fax: 1-631-938-8127

 45-1 Ramsey Road, Shirley, NY 11967, USA

Protein Array

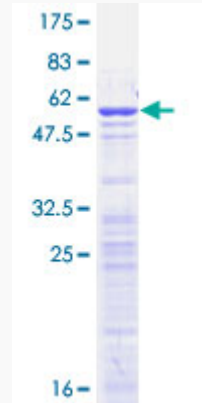
Notes	Best use within three months from the date of receipt of this protein.
Storage	Store at -8 centigrade. Aliquot to avoid repeated freezing and thawing.
Storage Buffer	50 mM Tris-HCl, 10 mM reduced Glutathione, pH=8.0 in the elution buffer.

GENE INFORMATION

Gene Name	H1FX H1 histone family, member X [Homo sapiens]
Official Symbol	H1FX
Synonyms	H1FX; H1 histone family, member X; histone H1x; H1X; MGC8350; MGC15959;
Gene ID	8971
mRNA Refseq	NM_006026
Protein Refseq	NP_006017
MIM	602785
UniProt ID	Q92522

 Tel: 1-631-559-9269 1-516-512-3133 Email: info@creative-biomart.com  Fax: 1-631-938-8127 45-1 Ramsey Road, Shirley, NY 11967, USA

**Quality Control
Testing**



12.5% SDS-PAGE Stained with Coomassie Blue.

 Tel: 1-631-559-9269 1-516-512-3133

 Email: info@creative-biomart.com  Fax: 1-631-938-8127

 45-1 Ramsey Road, Shirley, NY 11967, USA