

# Recombinant Human HADH Protein (Met1-Arg236), N-His tagged

**Cat. No.** HADH-2866H    **Lot. No.** (See product label)

## SPECIFICATION

<b>Product Overview</b>	Recombinant human HADH (Met1-Arg236) protein fused with the N-His tag was expressed in E. coli.
<b>Species</b>	Human
<b>Source</b>	E.coli
<b>ProteinLength</b>	Met1-Arg236
<b>Molecular Mass</b>	27.97 kDa
<b>Purity</b>	>90 % as determined by SDS-PAGE.
<b>Notes</b>	For research use only.
<b>Storage</b>	Use a manual defrost freezer and avoid repeated freeze thaw cycles. Store at 2 to 8 centigrade for one week. Store at -20 to -80 centigrade for twelve months from the date of receipt.
<b>Storage Buffer</b>	0.01M PBS, pH 7.4, 0.02 % NLS
<b>Reconstitution</b>	Reconstitute in sterile water for a stock solution.
<b>Shipping</b>	In general, proteins are provided as lyophilized powder/frozen liquid. They are

 Tel: 1-631-559-9269    1-516-512-3133

 Email: [info@creative-biomart.com](mailto:info@creative-biomart.com)     Fax: 1-631-938-8127

 45-1 Ramsey Road, Shirley, NY 11967, USA

shipped out with dry ice/blue ice unless customers require otherwise.

## GENE INFORMATION

**Gene Name** [HADH hydroxyacyl-CoA dehydrogenase \[ Homo sapiens \(human\) \]](#)

**Official Symbol** [HADH](#)

**Synonyms** HADH; hydroxyacyl-CoA dehydrogenase; HADHSC, hydroxyacyl Coenzyme A dehydrogenase, L 3 hydroxyacyl Coenzyme A dehydrogenase, short chain; hydroxyacyl-coenzyme A dehydrogenase, mitochondrial; HADH1; SCHAD; short-chain 3-hydroxyacyl-CoA dehydrogenase; L-3-hydroxyacyl-Coenzyme A dehydrogenase, short chain; medium and short-chain L-3-hydroxyacyl-coenzyme A dehydrogenase; HAD; HCDH; HHF4; HADHSC; MSCHAD; MGC8392;

**Gene ID** [3033](#)

**mRNA Refseq** [NM\\_001184705](#)

**Protein Refseq** [NP\\_001171634](#)

**MIM** [601609](#)

**UniProt ID** [Q16836](#)

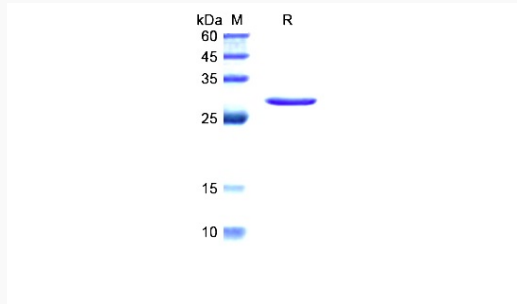
 Tel: 1-631-559-9269 1-516-512-3133

 Email: [info@creative-biomart.com](mailto:info@creative-biomart.com)  Fax: 1-631-938-8127

 45-1 Ramsey Road, Shirley, NY 11967, USA



SDS-PAGE



Tel: 1-631-559-9269 1-516-512-3133

Email: [info@creative-biomart.com](mailto:info@creative-biomart.com) Fax: 1-631-938-8127

45-1 Ramsey Road, Shirley, NY 11967, USA