

Recombinant Human HAND1 Protein, His tagged

Cat. No. HAND1-7171H Lot. No. (See product label)

SPECIFICATION

Product Overview	Recombinant Human HAND1 Protein with His tag was expressed in E. coli.
Species	Human
Source	E. coli
ProteinLength	1-215 aa
Storage	Store it under sterile conditions at -20 to -80 centigrade. It is recommended that the protein be aliquoted for optimal storage. Avoid repeated freeze-thaw cycles.
Storage Buffer	Sterile PBS, pH7.4, 10% Glycerol
AA Sequence	MGSSHHHHHHSSGLVPRGSHMGSMNLVGSYAHHHHHHHHPHPAHPMLHEPFLFGP ASRCHQERPYPFQSWLLSPADAAPDFPAGGPPPPAAAAAATAYGPDARPGQSPGRLE ALGGRLGRRKGS GPKKERRRTE SINSFAELRECIPNVPADTKLSKIKTLRLATS YIA YLMDVLAKDAQSGDPEAFKAELKKADGGRESKRKRELQQHEGFPPALGPVEKRIKG RTGWPQQVWALELNQ
Endotoxin	<1 EU/μg by LAL
Purity	> 90% by SDS-PAGE
Concentration	1 mg/mL by BCA

 Tel: 1-631-559-9269 1-516-512-3133

 Email: info@creative-biomart.com  Fax: 1-631-938-8127

 45-1 Ramsey Road, Shirley, NY 11967, USA

GENE INFORMATION

Official Symbol [HAND1](#)

Synonyms

HAND1; heart and neural crest derivatives expressed 1; heart- and neural crest derivatives-expressed protein 1; bHLHa27; eHand; Hxt; Thing1; class A basic helix-loop-helix protein 27; extraembryonic tissues, heart, autonomic nervous system and neural crest derivatives-expressed protein 1

Gene ID [9421](#)

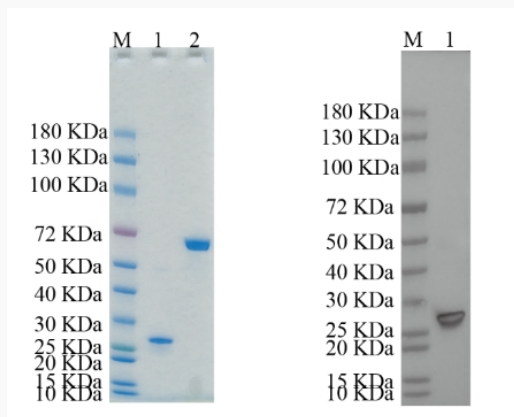
mRNA Refseq [NM_004821](#)

Protein Refseq [NP_004812](#)

MIM [602406](#)

UniProt ID [O96004](#)

SDS-PAGE and WB



Reducing 4%-20% SDS-PAGE (CBB stained) and WB (Anti-His Mouse Monoclonal)

 Tel: 1-631-559-9269 1-516-512-3133

 Email: info@creative-biomart.com  Fax: 1-631-938-8127

 45-1 Ramsey Road, Shirley, NY 11967, USA



antibody) analysis profiles of purified HAND1. 1. HAND1: 1 µg 2. BSA: 1 µg

 Tel: 1-631-559-9269 1-516-512-3133

 Email: info@creative-biomart.com  Fax: 1-631-938-8127

 45-1 Ramsey Road, Shirley, NY 11967, USA