

Recombinant Human HAPLN1 protein, His-tagged

Cat. No. HAPLN1-6744H Lot. No. (See product label)

SPECIFICATION

Product Overview	Recombinant Human HAPLN1 protein(16-131 aa), fused with N-terminal His tag, was expressed in E.coli.
Species	Human
Source	E.coli
ProteinLength	16-131 aa
Form	The purified protein was lyophilized from sterile phosphate-buffered saline (PBS: 58 mM Na ₂ HPO ₄ , 17 mM NaH ₂ PO ₄ , 68 mM NaCl, pH 7.4). Prior to lyophilization, 5% (w/v) trehalose and 5% (w/v) mannitol were incorporated as cryoprotective excipients.
AASequence	DHLSDNYTLDDHDRAIHQAENGPHELLVEAEQAKVFSHRGGNVTLPCCKFYRDPTAFGS GIHKIRIKWTKLTS DY LKEVDV FVSMGYHKKTYGGYQGRVFLKGGSDSDASLVITDLT L
Purity	85%, by SDS-PAGE with Coomassie Brilliant Blue staining.
Storage	Store at 2-8°C for 1-2 weeks. Aliquot and store at -20°C to -80°C for up to 3 months, reconstitution with sterile water and addition of an equal volume of glycerol. Avoid repeat freeze-thaw cycles.
Reconstitution	Dissolve the product in 200 µl sterile water to achieve a working concentration of 0.25

 Tel: 1-631-559-9269 1-516-512-3133

 Email: info@creative-biomart.com  Fax: 1-631-938-8127

 45-1 Ramsey Road, Shirley, NY 11967, USA

g/μl. If experimental compatibility allows, mix the aqueous solution with an equal volume of glycerol (1:1 ratio) after initial reconstitution.

GENE INFORMATION

Gene Name	HAPLN1 hyaluronan and proteoglycan link protein 1 [Homo sapiens]
Official Symbol	HAPLN1
Synonyms	HAPLN1; hyaluronan and proteoglycan link protein 1; cartilage linking protein 1 , CRTL1; Cartilage link protein; cartilage-link protein; proteoglycan link protein; cartilage linking protein 1; cartilage-linking protein 1; CRTL1;
Gene ID	1404
mRNA Refseq	NM_001884
Protein Refseq	NP_001875
MIM	115435
UniProt ID	P10915

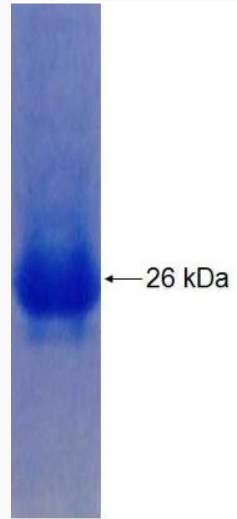
 Tel: 1-631-559-9269 1-516-512-3133

 Email: info@creative-biomart.com  Fax: 1-631-938-8127

 45-1 Ramsey Road, Shirley, NY 11967, USA



SDS-PAGE



Tel: 1-631-559-9269 1-516-512-3133

Email: info@creative-biomart.com Fax: 1-631-938-8127

45-1 Ramsey Road, Shirley, NY 11967, USA