

Recombinant Human HAPLN1 protein, His-SUMO-tagged

Cat. No. HAPLN1-7544H Lot. No. (See product label)

SPECIFICATION

Product Overview	Recombinant Human HAPLN1 protein(P10915)(16-354aa), fused with N-terminal His and SUMO tag, was expressed in E.coli.
Species	Human
Source	E.coli
ProteinLength	16-354aa
Form	If the delivery form is liquid, the default storage buffer is Tris/PBS-based buffer, 5%-50% glycerol. If the delivery form is lyophilized powder, the buffer before lyophilization is Tris/PBS-based buffer, 6% Trehalose, pH 8.0.
Molecular Mass	51.4 kDa
Purity	Greater than 85% as determined by SDS-PAGE.
Storage	Store at -20°C/-80°C upon receipt, aliquoting is necessary for mutiple use. Avoid repeated freeze-thaw cycles.
Reconstitution	We recommend that this vial be briefly centrifuged prior to opening to bring the contents to the bottom. Please reconstitute protein in deionized sterile water to a concentration of 0.1-1.0 mg/mL. We recommend to add 5-50% of glycerol (final concentration) and aliquot for long-term storage at -20°C/-80°C.

 Tel: 1-631-559-9269 1-516-512-3133

 Email: info@creative-biomart.com  Fax: 1-631-938-8127

 45-1 Ramsey Road, Shirley, NY 11967, USA

AA Sequence

DHLSDNYTLDHDRAIHIQAENGPHELLVEAEQAKVFSHRGGNVTLPCKFYRDPTAFGS
 GIHKIRIKWTKLTSYDLKEVDVFMVSMGYHKKTYGGYQGRVFLKGGSDSDASLVITDLT
 LEDYGRYKCEVIEGLEDDTVVVALDLQGVPYFPRLGRYNLNFHEAQQACLDQDA
 VIASFDQLYDAWRGGLDWCNAGWLSDGVSQYPITKPREPCGGQNTVPGVRNYGF
 WDKDKSRYDVFCFTSNFNRFYLIHPTKLTIDEAVQACLNDGAQIAKVGQIFAAWK
 ILGYDRCDAGWLADGVSRYPISRPRRRCSPTAAVRFVGFDPDKKHKLYGVYCFRAY
 N

GENE INFORMATION

Gene Name [HAPLN1 hyaluronan and proteoglycan link protein 1 \[Homo sapiens \]](#)

Official Symbol [HAPLN1](#)

Synonyms

HAPLN1; hyaluronan and proteoglycan link protein 1; cartilage linking protein 1 ,
 CRTL1; Cartilage link protein; cartilage-link protein; proteoglycan link protein;
 cartilage linking protein 1; cartilage-linking protein 1; CRTL1;

Gene ID [1404](#)

mRNA Refseq [NM_001884](#)

Protein Refseq [NP_001875](#)

MIM [115435](#)

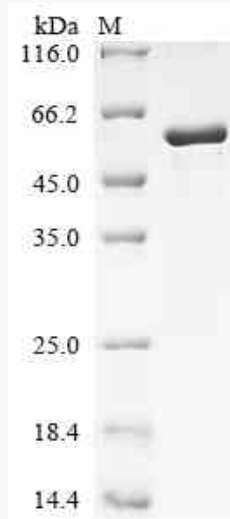
UniProt ID [P10915](#)

 Tel: 1-631-559-9269 1-516-512-3133

 Email: info@creative-biomart.com  Fax: 1-631-938-8127

 45-1 Ramsey Road, Shirley, NY 11967, USA

SDS-PAGE



 Tel: 1-631-559-9269 1-516-512-3133

 Email: info@creative-biomart.com  Fax: 1-631-938-8127

 45-1 Ramsey Road, Shirley, NY 11967, USA