

Recombinant Human HARBI1 protein, GST-tagged

Cat. No. HARBI1-5333H **Lot. No.** (See product label)

SPECIFICATION

Product Overview	Recombinant Human HARBI1 protein(1-349 aa), fused with N-terminal GST tag, was expressed in E.coli.
Species	Human
Source	E.coli
ProteinLength	1-349 aa
Form	The purified protein was lyophilized from sterile phosphate-buffered saline (PBS: 58 mM Na ₂ HPO ₄ , 17 mM NaH ₂ PO ₄ , 68 mM NaCl, pH 8.0). Prior to lyophilization, 5% (w/v) trehalose and 5% (w/v) mannitol were incorporated as cryoprotective excipients. The protein was eluted with a buffer containing 100 mM reduced glutathione (GSH).
AASequence	MAIPITVLDCDLLLYGRGHRTLDRFKLDDVTDEYLMSMYGFPRQFIYYLVELLGANLS RPTQRSRAISPETQVLAALGFYTSQSFQTRMGDAIGISQASMSRCVANVTEALVERA SQFIRFPADIASIQALKDEFYGLAGMPGVMGVVDCIHVAIKAPNAEDLSYVNRKGLH SLNCLMVCDIRGTLMTVETNWPGLQDCAVLQQSSLSSQFEAGMHKDSWLLGDSS FFLRTWLMTPLHIPETPAEYRYNMAHSATHSVIEKTFRTLCSRFRCLDGSKGALQYS PEKSSHILACCVLHNISLEHGMDVWSSPMTGPMEQPPEEEYEHMESLDLEADRIRQ ELMLTHFS
Purity	85%, by SDS-PAGE with Coomassie Brilliant Blue staining.

 Tel: 1-631-559-9269 1-516-512-3133

 Email: info@creative-biomart.com  Fax: 1-631-938-8127

 45-1 Ramsey Road, Shirley, NY 11967, USA

Storage Store at 2-8°C for 1-2 weeks. Aliquot and store at -20°C to -80°C for up to 3 months, reconstitution with sterile water and addition of an equal volume of glycerol. Avoid repeat freeze-thaw cycles.

Reconstitution Dissolve the product in 200 µl sterile water to achieve a working concentration of 0.25 g/µl. If experimental compatibility allows, mix the aqueous solution with an equal volume of glycerol (1:1 ratio) after initial reconstitution.

GENE INFORMATION

Gene Name HARBI1 harbinger transposase derived 1 [Homo sapiens]

Official Symbol HARBI1

Synonyms HARBI1; harbinger transposase derived 1; C11orf77, chromosome 11 open reading frame 77; putative nuclease HARBI1; FLJ32675; harbinger transposase-derived nuclease; C11orf77;

Gene ID 283254

mRNA Refseq NM_173811

Protein Refseq NP_776172

UniProt ID Q96MB7

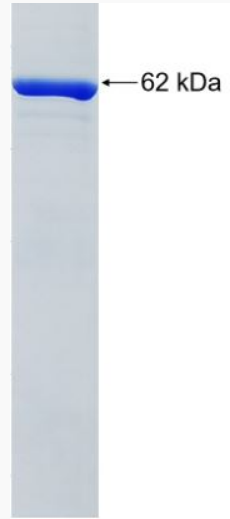
 Tel: 1-631-559-9269 1-516-512-3133

 Email: info@creative-biomart.com  Fax: 1-631-938-8127

 45-1 Ramsey Road, Shirley, NY 11967, USA



SDS-PAGE



☎ Tel: 1-631-559-9269 1-516-512-3133

☎ Email: info@creative-biomart.com ☎ Fax: 1-631-938-8127

☎ 45-1 Ramsey Road, Shirley, NY 11967, USA