

## Recombinant Human HAT1 Protein, GST-tagged

**Cat. No.** HAT1-4586H    **Lot. No.** (See product label)

### SPECIFICATION

<b>Product Overview</b>	Human HAT1 full-length ORF ( AAH63003, 1 a.a. - 334 a.a.) recombinant protein with GST-tag at N-terminal.
<b>Species</b>	Human
<b>Source</b>	Wheat Germ
<b>Description</b>	<p>The protein encoded by this gene is a type B histone acetyltransferase (HAT) that is involved in the rapid acetylation of newly synthesized cytoplasmic histones, which are in turn imported into the nucleus for de novo deposition onto nascent DNA chains. Histone acetylation, particularly of histone H4, plays an important role in replication-dependent chromatin assembly. Specifically, this HAT can acetylate soluble but not nucleosomal histone H4 at lysines 5 and 12, and to a lesser degree, histone H2A at lysine 5. Alternatively spliced transcript variants have been identified for this gene. [provided by RefSeq]</p>
<b>Molecular Mass</b>	62.48 kDa
<b>AA Sequence</b>	<p>MFRVEYASKVDENFDCVEADDVEGKIRQIIPPGFCTNTNDFLSLLEKEVDFKPFGTLL  HTYSVLSPTGGENFTFQIYKADMTCRGRFREYHERLQTFMLWFIETASFIDVDDERWH  YFLVFEKYNKDGATLFATVGYMTVYNYVYPDKTRPRVSQMLILTPFQGQGHGAQL  LETVHRYYTEFPTVLDITAEDPSKSYVKLRDFVLVKLCQDLPCFSREKLMQGFNEDM  AIEAQQKFKINKQHARRVYEILRLLVTDMSDAEQYRSYRLDIKRRLLISPYKKKQRDLA  KMRKCLRPEELTNQMNQIEISMQHEQLEESFQELVEDYRRVIERLAQE</p>

 Tel: 1-631-559-9269    1-516-512-3133

 Email: [info@creative-biomart.com](mailto:info@creative-biomart.com)     Fax: 1-631-938-8127

 45-1 Ramsey Road, Shirley, NY 11967, USA

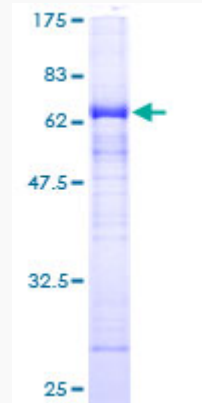
<b>Applications</b>	Enzyme-linked Immunoabsorbent Assay Western Blot (Recombinant protein) Antibody Production Protein Array
<b>Notes</b>	Best use within three months from the date of receipt of this protein.
<b>Storage</b>	Store at -8 centigrade. Aliquot to avoid repeated freezing and thawing.
<b>Storage Buffer</b>	50 mM Tris-HCl, 10 mM reduced Glutathione, pH=8.0 in the elution buffer.
<b>GENE INFORMATION</b>	
<b>Gene Name</b>	HAT1 histone acetyltransferase 1 [ Homo sapiens ]
<b>Official Symbol</b>	HAT1
<b>Synonyms</b>	HAT1; histone acetyltransferase 1; histone acetyltransferase type B catalytic subunit; KAT1;
<b>Gene ID</b>	8520
<b>mRNA Refseq</b>	NM_003642
<b>Protein Refseq</b>	NP_003633
<b>MIM</b>	603053
<b>UniProt ID</b>	O14929

 Tel: 1-631-559-9269 1-516-512-3133

 Email: [info@creative-biomart.com](mailto:info@creative-biomart.com)  Fax: 1-631-938-8127

 45-1 Ramsey Road, Shirley, NY 11967, USA

**Quality Control  
Testing**



12.5% SDS-PAGE Stained with Coomassie Blue.

 Tel: 1-631-559-9269 1-516-512-3133

 Email: [info@creative-biomart.com](mailto:info@creative-biomart.com)  Fax: 1-631-938-8127

 45-1 Ramsey Road, Shirley, NY 11967, USA