

Recombinant Human HAUS1 Protein, Myc/DDK-tagged, C13 and N15-labeled

Cat. No. HAUS1-2956H Lot. No. (See product label)

SPECIFICATION

Product Overview	HAUS1 MS Standard C13 and N15-labeled recombinant protein (NP_612452) with a C-terminal MYC/DDK tag, was expressed in HEK293 cells.
Species	Human
Source	HEK293
Description	HAUS1 is 1 of 8 subunits of the 390-kD human augmin complex, or HAUS complex. The augmin complex was first identified in Drosophila, and its name comes from the Latin verb 'augmentare,' meaning 'to increase.' The augmin complex is a microtubule-binding complex involved in microtubule generation within the mitotic spindle and is vital to mitotic spindle assembly.
Molecular Mass	31.9 kDa
AA Sequence	MEPQEERETQVAAWLKKIFGDHPIQYEVNPRRTTEILHHLSENRNRVRDRDVYLVIED LKQKASEYESEAKYLQDLLMESVNFSPANLSSTGSRYLNALVDSAVALETKDTSLAS FIPAVNDLTSDFRRTKSKSEEIKIELEKLEKNLTATLVLEKCLQEDVKKAELHLSTERAK VDNRRQNMDFLKAKSEEFRFGIKAAEEQLSARGMDASLSHQSLValseklarlkqq TIPLKKKLESYLDLMPNPslaqvkieeakrelDSIEaelTRRVDMmelTRTRPLEQKLI SEEDLAANDILDYKDDDDKV
Purity	> 80% as determined by SDS-PAGE and Coomassie blue staining

 Tel: 1-631-559-9269 1-516-512-3133

 Email: info@creative-biomart.com  Fax: 1-631-938-8127

 45-1 Ramsey Road, Shirley, NY 11967, USA

Stability	Stable for 3 months from receipt of products under proper storage and handling conditions.
Storage	Store at -80 centigrade. Avoid repeated freeze-thaw cycles.
Concentration	50 µg/mL as determined by BCA
Storage Buffer	100 mM glycine, 25 mM Tris-HCl, pH 7.3.
GENE INFORMATION	
Gene Name	HAUS1 HAUS augmin like complex subunit 1 [Homo sapiens (human)]
Official Symbol	HAUS1
Synonyms	HAUS1; HAUS augmin-like complex, subunit 1; CCDC5, coiled coil domain containing 5 (spindle associated); HAUS augmin-like complex subunit 1; FLJ40084; HEI C; HsT1461; enhancer of invasion-cluster; coiled-coil domain-containing protein 5; coiled-coil domain containing 5 (spindle associated); HEIC; CCDC5; HEI-C; FLJ21094;
Gene ID	115106
mRNA Refseq	NM_138443
Protein Refseq	NP_612452
MIM	608775
UniProt ID	Q96CS2

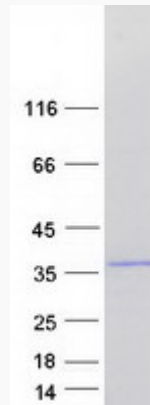
 Tel: 1-631-559-9269 1-516-512-3133

 Email: info@creative-biomart.com  Fax: 1-631-938-8127

 45-1 Ramsey Road, Shirley, NY 11967, USA



SDS-PAGE



Tel: 1-631-559-9269 1-516-512-3133

Email: info@creative-biomart.com Fax: 1-631-938-8127

45-1 Ramsey Road, Shirley, NY 11967, USA