

Recombinant Human HAUS2 Protein, GST-tagged

Cat. No. HAUS2-5173H Lot. No. (See product label)

SPECIFICATION

Product Overview	Human CEP27 full-length ORF (NP_060567.1, 1 a.a. - 235 a.a.) recombinant protein with GST-tag at N-terminal.
Species	Human
Source	Wheat Germ
Description	The protein encoded by this gene is a subunit of the augmin complex. The augmin complex plays a role in microtubule attachment to the kinetochore and central spindle formation. [provided by RefSeq, Apr 2016]
Molecular Mass	53.3 kDa
AA Sequence	MAAANPWPASAPNGAGLVLGHFASGMVQNQEMLNMSKKTVSCFVNFTRLQQITNI QAEIYQKNLEIELLKLEKDTADVVHPFFLAQKCHTLQSMNNHLEAVLKEKRSLRQRL KPMCQENLPIEAVYHRYMVHLLAVTFIERLETHLETIRNIPHLAANLKKMNQALAK MDILVTETEELAENILKWRKQQNEVSSCIPKILAEESYLYKHDIIMPPLPFTSKVHVQTI NAK
Applications	Enzyme-linked Immunoabsorbent Assay Western Blot (Recombinant protein) Antibody Production Protein Array
Notes	Best use within three months from the date of receipt of this protein.

 Tel: 1-631-559-9269 1-516-512-3133

 Email: info@creative-biomart.com  Fax: 1-631-938-8127

 45-1 Ramsey Road, Shirley, NY 11967, USA

Storage Store at -80 centigrade. Aliquot to avoid repeated freezing and thawing.

Storage Buffer 50 mM Tris-HCl, 10 mM reduced Glutathione, pH=8.0 in the elution buffer.

GENE INFORMATION

Gene Name HAUS2 HAUS augmin like complex subunit 2 [Homo sapiens (human)]

Official Symbol HAUS2

Synonyms HAUS2; HAUS augmin like complex subunit 2; CEP27; C15orf25; HsT17025; HAUS augmin-like complex subunit 2; centrosomal protein 27kDa; centrosomal protein of 27 kDa

Gene ID 55142

mRNA Refseq NM_001130447

Protein Refseq NP_001123919

MIM 613429

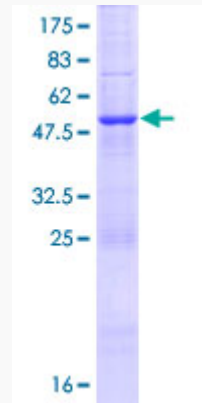
UniProt ID Q9NVX0

 Tel: 1-631-559-9269 1-516-512-3133

 Email: info@creative-biomart.com  Fax: 1-631-938-8127

 45-1 Ramsey Road, Shirley, NY 11967, USA

**Quality Control
Testing**



12.5% SDS-PAGE Stained with Coomassie Blue.

 Tel: 1-631-559-9269 1-516-512-3133

 Email: info@creative-biomart.com  Fax: 1-631-938-8127

 45-1 Ramsey Road, Shirley, NY 11967, USA