

## Recombinant Human HAVCR1 protein, His-tagged

Cat. No. HAVCR1-791H Lot. No. (See product label)

### SPECIFICATION

<b>Product Overview</b>	Recombinant Human HAVCR1 protein(AAC39862.1) (Ser 21-Gly 290) was expressed in HEK293, fused with a polyhistidine tag at the N-terminus.
<b>Species</b>	Human
<b>Source</b>	HEK293
<b>ProteinLength</b>	21-290 aa
<b>Form</b>	Lyophilized from sterile PBS, pH 7.4.
<b>Molecular Mass</b>	The secreted recombinant human KIM1 comprises 289 amino acids and predicts a molecular mass of 31.3 kDa. The apparent molecular mass of the recombinant protein is approximately 80-100 kDa in SDS-PAGE under reducing conditions due to high glycosylation.
<b>Endotoxin</b>	< 1.0 EU per µg of the protein as determined by the LAL method.
<b>Purity</b>	> 93 % as determined by SDS-PAGE
<b>Storage</b>	Store it under sterile conditions at -20°C to -80°C upon receiving. Recommend to aliquot the protein into smaller quantities for optimal storage. Avoid repeated freeze-thaw cycles.
<b>Reconstitution</b>	It is recommended that sterile water be added to the vial to prepare a stock solution of

 Tel: 1-631-559-9269 1-516-512-3133

 Email: [info@creative-biomart.com](mailto:info@creative-biomart.com)  Fax: 1-631-938-8127

 45-1 Ramsey Road, Shirley, NY 11967, USA

0.2 ug/ul. Centrifuge the vial at 4°C before opening to recover the entire contents.

**protein Refseq-Weblink** [http://www.ncbi.nlm.nih.gov/protein/NP\\_001092884.1](http://www.ncbi.nlm.nih.gov/protein/NP_001092884.1)

**Unit ID** Q96D42

**Unit ID-Weblink** <https://www.uniprot.org/uniprotkb/Q96D42>

## GENE INFORMATION

**Gene Name** [HAVCR1 hepatitis A virus cellular receptor 1 \[ Homo sapiens \]](#)

**Official Symbol** [HAVCR1](#)

**Synonyms** HAVCR1; hepatitis A virus cellular receptor 1; HAVCR; HAVCR 1; TIM 1; TIM1; TIMD1; kidney injury molecule 1; T-cell membrane protein 1; T cell immunoglobulin domain and mucin domain protein 1; TIM; KIM1; KIM-1; TIM-1; TIMD-1; HAVCR-1;

**Gene ID** [26762](#)

**mRNA Refseq** [NM\\_001099414](#)

**protein Refseq** NP\_001092884

**MIM** [606518](#)

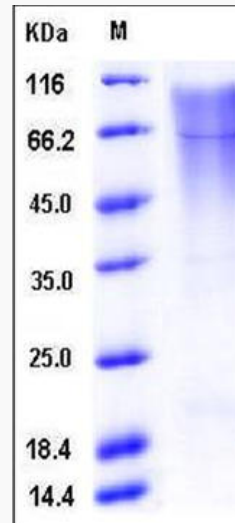
 Tel: 1-631-559-9269 1-516-512-3133

 Email: [info@creative-biomart.com](mailto:info@creative-biomart.com)  Fax: 1-631-938-8127

 45-1 Ramsey Road, Shirley, NY 11967, USA



SDS-PAGE



Tel: 1-631-559-9269 1-516-512-3133

Email: [info@creative-biomart.com](mailto:info@creative-biomart.com) Fax: 1-631-938-8127

45-1 Ramsey Road, Shirley, NY 11967, USA