

Recombinant Human HAX1 Protein, GST-tagged

Cat. No. HAX1-4592H **Lot. No.** (See product label)

SPECIFICATION

| | |
|-------------------------|---|
| Product Overview | Human HAX1 full-length ORF (AAH15209.1, 1 a.a. - 279 a.a.) recombinant protein with GST-tag at N-terminal. |
| Species | Human |
| Source | Wheat Germ |
| Description | The protein encoded by this gene is known to associate with hematopoietic cell-specific Lyn substrate 1, a substrate of Src family tyrosine kinases. It also interacts with the product of the polycystic kidney disease 2 gene, mutations in which are associated with autosomal-dominant polycystic kidney disease, and with the F-actin-binding protein, cortactin. It was earlier thought that this gene product is mainly localized in the mitochondria, however, recent studies indicate it to be localized in the cell body. Mutations in this gene result in autosomal recessive severe congenital neutropenia, also known as Kostmann disease. Two transcript variants encoding different isoforms have been found for this gene. [provided by RefSeq] |
| Molecular Mass | 56.43 kDa |
| AA Sequence | MSLFDLFRGFFGFPGRSHRDPFFGGMTRDEDDDEEEEEEGGSWGRGNPRFHSP QHPPEEFGFGFSFSPGGGIRFHDNFGFDDLVRDFNSIFSDMGAWTLPSHPPELPGP ESETPGERLREGQTLRDSMLKYPDSHQPRIFGGVLESDARSESPQPAPDWGSQRP FHRFDDVWPMDPHPRTREDNDLDSQVSQEGLPVLQPQPKSYFKSISVTKITKPDG IVEERRTVVDSEGRTEETTTRHEADSSPRGDPE SPRPPALDDAFSILDLFLGRWFRS |

 Tel: 1-631-559-9269 1-516-512-3133

 Email: info@creative-biomart.com  Fax: 1-631-938-8127

 45-1 Ramsey Road, Shirley, NY 11967, USA

| | |
|-------------------------|---|
| | R |
| Applications | Enzyme-linked Immunoabsorbent Assay Western Blot (Recombinant protein) Antibody Production Protein Array |
| Notes | Best use within three months from the date of receipt of this protein. |
| Storage | Store at -8 centigrade. Aliquot to avoid repeated freezing and thawing. |
| Storage Buffer | 50 mM Tris-HCl, 10 mM reduced Glutathione, pH=8.0 in the elution buffer. |
| GENE INFORMATION | |
| Gene Name | HAX1 HCLS1 associated protein X-1 [Homo sapiens] |
| Official Symbol | HAX1 |
| Synonyms | HAX1; HCLS1 associated protein X-1; HCLS1-associated protein X-1; HCLS1 (and PKD2) associated protein; HCLSBP1; HS1BP1; HAX-1; HSP1BP-1; HS1 binding protein; HS1-binding protein 1; HS1-associating protein X-1; SCN3; FLJ17042; FLJ18492; FLJ93803; |
| Gene ID | 10456 |
| mRNA Refseq | NM_001018837 |
| Protein Refseq | NP_001018238 |
| MIM | 605998 |

 Tel: 1-631-559-9269 1-516-512-3133

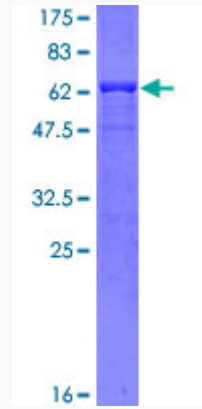
 Email: info@creative-biomart.com  Fax: 1-631-938-8127

 45-1 Ramsey Road, Shirley, NY 11967, USA

UniProt ID

O00165

Quality Control
Testing



12.5% SDS-PAGE Stained with Coomassie Blue.

 Tel: 1-631-559-9269 1-516-512-3133

 Email: info@creative-biomart.com  Fax: 1-631-938-8127

 45-1 Ramsey Road, Shirley, NY 11967, USA