

# Recombinant Sperm Whale Hemoglobin HBA&HBB Protein

Cat. No. HB-01W Lot. No. (See product label)

## SPECIFICATION

<b>Product Overview</b>	Recombinant Sperm Whale Hemoglobin HBA&HBB Protein without tag was expressed in E. coli.
<b>Species</b>	Whale
<b>Source</b>	E.coli
<b>Description</b>	Haemoglobin, the red pigment in blood, consists of a protein component and the iron complex of a porphyrin derivative: haemoglobin = globin (protein) + haemochromogen (Fe (II) complex).
<b>Molecular Mass</b>	HBA: 16.2 kDa HBB: 18.2 kDa
<b>AA Sequence</b>	HBA: MVLSPADKTNVKAAWAKVGNHAADFGAEALERMFMSFPSTKTYFSHF <sub>2</sub> DLGH NSTQVKGHGKKVADALTKAVGHLDLTPDALSDLSD <sub>2</sub> LHAHKLRVDPVNFKLLSHCLLV TLAAHLPGDFTPSVHASLDKFLASVSTVLTSKYRHHHHHHH HBB: MVHLTGEEEKSGLTALWAKVNVEEIGGEALGRLLVVYPWTQRFFEFHFGDLSTA DAVMKNPKVKKHGQKVLASFGEG <sub>2</sub> LKHLN <sub>2</sub> LKGT <sub>2</sub> FATLSELHCDKLHVDPENFRLLG NVLVV <sub>2</sub> LARHFGKEFTPELQTAYQKV <sub>2</sub> VAGVANALAHKYHWSHPQFEKHHHHHHH
<b>Purity</b>	> 90% by SDS-PAGE
<b>Storage</b>	Upon receipt, centrifuge the product briefly before opening the vial. Store it under sterile conditions at -20 to -80 centigrade. It is recommended that the protein be

 Tel: 1-631-559-9269 1-516-512-3133

 Email: [info@creative-biomart.com](mailto:info@creative-biomart.com)  Fax: 1-631-938-8127

 45-1 Ramsey Road, Shirley, NY 11967, USA

aliquoted for optimal storage. Avoid repeated freeze-thaw cycles.

**Concentration** 2.5 mg/mL (A280; Abs 0.1% (=1 g/L): 0.86)

**Storage Buffer** Supplied in sterile PBS, pH7.4

## GENE INFORMATION

**Gene Name** LOC102987983 hemoglobin subunit alpha [ *Physeter catodon* (sperm whale) ]

**Official Symbol** LOC102987983

**Synonyms** LOC102987983; hemoglobin subunit alpha; HBA; hemoglobin subunit alpha; LOC102976944; hemoglobin subunit beta-1/2; HBB; HB; hemoglobin subunit beta-1/2; hemoglobin subunit beta

**Gene ID** 102987983

**mRNA Refseq** XM\_007130378

**Protein Refseq** XP\_007130440

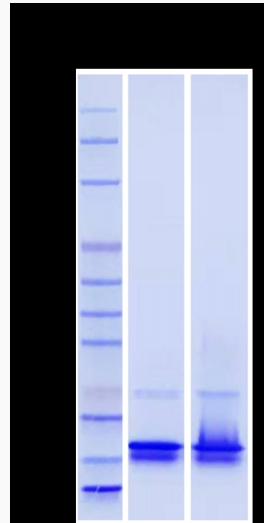
 Tel: 1-631-559-9269 1-516-512-3133

 Email: [info@creative-biomart.com](mailto:info@creative-biomart.com)  Fax: 1-631-938-8127

 45-1 Ramsey Road, Shirley, NY 11967, USA



SDS-PAGE



5 µg/Lane

Tel: 1-631-559-9269 1-516-512-3133

Email: [info@creative-biomart.com](mailto:info@creative-biomart.com) Fax: 1-631-938-8127

45-1 Ramsey Road, Shirley, NY 11967, USA