

Recombinant Human HBB Protein, MYC/DDK-tagged, C13 and N15-labeled

Cat. No. HBB-094H Lot. No. (See product label)

SPECIFICATION

Product Overview	HBB MS Standard C13 and N15-labeled recombinant protein (NP_000509) with a C-terminal MYC/DDK tag, was expressed in HEK293 cells.
Species	Human
Source	HEK293
Description	The alpha (HBA) and beta (HBB) loci determine the structure of the 2 types of polypeptide chains in adult hemoglobin, Hb A. The normal adult hemoglobin tetramer consists of two alpha chains and two beta chains. Mutant beta globin causes sickle cell anemia. Absence of beta chain causes beta-zero-thalassemia. Reduced amounts of detectable beta globin causes beta-plus-thalassemia. The order of the genes in the beta-globin cluster is 5'-epsilon -- gamma-G -- gamma-A -- delta -- beta--3'.
Molecular Mass	16 kDa
AA Sequence	MVHLTPEEKSAVTALWGKVNVDVEVGGEALGRLLVVYPWTQRFFESFGDLSTPDAV MGNPKVKAHGKKVLGAFSDGLAHLNLDKGTFFATLSEIHCDKLVDPENFRLLGNVL VCVLAHHFGKEFTPPVQAAYQKVVAGVANALAHKYHTRTRPLEQKLISEEDLAANDI LDYKDDDDKV
Purity	> 80% as determined by SDS-PAGE and Coomassie blue staining
Stability	Stable for 3 months from receipt of products under proper storage and handling

 Tel: 1-631-559-9269 1-516-512-3133

 Email: info@creative-biomart.com  Fax: 1-631-938-8127

 45-1 Ramsey Road, Shirley, NY 11967, USA

conditions.

Storage Store at -80 centigrade. Avoid repeated freeze-thaw cycles.

Concentration 50 µg/mL as determined by BCA

Storage Buffer 100 mM glycine, 25 mM Tris-HCl, pH 7.3.

GENE INFORMATION

Gene Name [HBB hemoglobin subunit beta \[Homo sapiens \(human\) \]](#)

Official Symbol [HBB](#)

Synonyms HBB; hemoglobin subunit beta; beta-globin; CD113t-C; ECT6; hemoglobin subunit beta; beta globin chain; hemoglobin beta subunit; hemoglobin, beta

Gene ID [3043](#)

mRNA Refseq [NM_000518](#)

Protein Refseq [NP_000509](#)

MIM [141900](#)

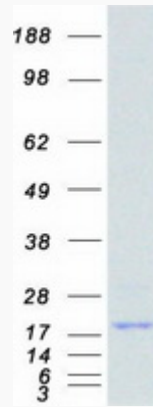
UniProt ID [P68871](#)

 Tel: 1-631-559-9269 1-516-512-3133

 Email: info@creative-biomart.com  Fax: 1-631-938-8127

 45-1 Ramsey Road, Shirley, NY 11967, USA

SDS-PAGE



 Tel: 1-631-559-9269 1-516-512-3133

 Email: info@creative-biomart.com  Fax: 1-631-938-8127

 45-1 Ramsey Road, Shirley, NY 11967, USA