

# Recombinant Full Length Human HBB Protein, C-Flag-tagged

Cat. No. HBB-181HFL Lot. No. (See product label)

## SPECIFICATION

<b>Product Overview</b>	Recombinant Full Length Human HBB Protein, fused to Flag-tag at C-terminus, was expressed in Mammalian cells.
<b>Species</b>	Human
<b>Source</b>	Mammalian Cells
<b>Description</b>	The alpha (HBA) and beta (HBB) loci determine the structure of the 2 types of polypeptide chains in adult hemoglobin, Hb A. The normal adult hemoglobin tetramer consists of two alpha chains and two beta chains. Mutant beta globin causes sickle cell anemia. Absence of beta chain causes beta-zero-thalassemia. Reduced amounts of detectable beta globin causes beta-plus-thalassemia. The order of the genes in the beta-globin cluster is 5'-epsilon -- gamma-G -- gamma-A -- delta -- beta--3'.
<b>Form</b>	25 mM Tris HCl, pH 7.3, 100 mM glycine, 10% glycerol.
<b>Molecular Mass</b>	15.8 kDa
<b>AA Sequence</b>	MVHLTPEEKSAVTALWGKVNVDVEVGGEALGRLLVVYPWTQRFFESFGDLSTPDAV MGNPKVKAHGKKVLG AFSDGLAHLDNLKGTFATLSELHCDKLHVDPENFRLLGNVL VCVLAHHFGKEFTPPVQAAYQKVVAGVAN ALAHKYHTRTRPLEQKLISEEDLAANDILDYKDDDDKV
<b>Purity</b>	> 80% as determined by SDS-PAGE and Coomassie blue staining.

 Tel: 1-631-559-9269 1-516-512-3133

 Email: [info@creative-biomart.com](mailto:info@creative-biomart.com)  Fax: 1-631-938-8127

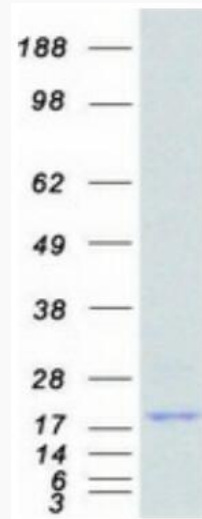
 45-1 Ramsey Road, Shirley, NY 11967, USA

<b>Stability</b>	Stable for 12 months from the date of receipt of the product under proper storage and handling conditions. Avoid repeated freeze-thaw cycles.
<b>Storage</b>	Store at -80 centigrade.
<b>Concentration</b>	>50 ug/mL as determined by microplate BCA method.
<b>Preparation</b>	Recombinant protein was captured through anti-DDK affinity column followed by conventional chromatography steps.
<b>Full Length</b>	Full L.
<b>GENE INFORMATION</b>	
<b>Gene Name</b>	<a href="#">HBB hemoglobin subunit beta [ Homo sapiens (human) ]</a>
<b>Official Symbol</b>	<a href="#">HBB</a>
<b>Synonyms</b>	ECYT6; CD113t-C; beta-globin
<b>Gene ID</b>	<a href="#">3043</a>
<b>mRNA Refseq</b>	<a href="#">NM_000518.5</a>
<b>Protein Refseq</b>	<a href="#">NP_000509.1</a>
<b>MIM</b>	<a href="#">141900</a>
<b>UniProt ID</b>	<a href="#">P68871</a>

 Tel: 1-631-559-9269 1-516-512-3133

 Email: [info@creative-biomart.com](mailto:info@creative-biomart.com)  Fax: 1-631-938-8127

 45-1 Ramsey Road, Shirley, NY 11967, USA



Coomassie blue staining of purified HBB protein.

 Tel: 1-631-559-9269 1-516-512-3133

 Email: [info@creative-biomart.com](mailto:info@creative-biomart.com)  Fax: 1-631-938-8127

 45-1 Ramsey Road, Shirley, NY 11967, USA