

Recombinant Human HBEGF Protein (Val21-Thr160), N-His tagged

Cat. No. HBEGF-3004H Lot. No. (See product label)

SPECIFICATION

Product Overview	Recombinant human HBEGF (Val21-Thr160) protein fused with the N-His tag was expressed in E. coli.
Species	Human
Source	E.coli
ProteinLength	Val21-Thr160
Molecular Mass	17.95 kDa
Purity	>90 % as determined by SDS-PAGE.
Notes	For research use only.
Storage	Use a manual defrost freezer and avoid repeated freeze thaw cycles. Store at 2 to 8 centigrade for one week. Store at -20 to -80 centigrade for twelve months from the date of receipt.
Storage Buffer	0.01M PBS, pH 7.4, 0.02 % NLS
Reconstitution	Reconstitute in sterile water for a stock solution.
Shipping	In general, proteins are provided as lyophilized powder/frozen liquid. They are

 Tel: 1-631-559-9269 1-516-512-3133

 Email: info@creative-biomart.com  Fax: 1-631-938-8127

 45-1 Ramsey Road, Shirley, NY 11967, USA

shipped out with dry ice/blue ice unless customers require otherwise.

GENE INFORMATION

Gene Name HBEGF heparin-binding EGF-like growth factor [Homo sapiens (human)]

Official Symbol HBEGF

Synonyms HBEGF; heparin-binding EGF-like growth factor; diphtheria toxin receptor (heparin binding epidermal growth factor like growth factor), DTR, DTS, HEGFL; proheparin-binding EGF-like growth factor; Diphtheria toxin receptor (heparin binding EGF like growth factor); heparin binding epidermal growth factor; heparin-binding epidermal growth factor; diphtheria toxin receptor (heparin-binding EGF-like growth factor); diphtheria toxin receptor (heparin-binding epidermal growth factor-like growth factor); DTR; DTS; DTSF; HEGFL;

Gene ID 1839

mRNA Refseq NM_001945

Protein Refseq NP_001936

MIM 126150

UniProt ID Q99075

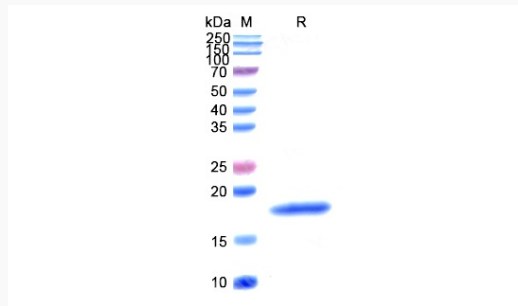
 Tel: 1-631-559-9269 1-516-512-3133

 Email: info@creative-biomart.com  Fax: 1-631-938-8127

 45-1 Ramsey Road, Shirley, NY 11967, USA



SDS-PAGE



Tel: 1-631-559-9269 1-516-512-3133

Email: info@creative-biomart.com Fax: 1-631-938-8127

45-1 Ramsey Road, Shirley, NY 11967, USA