

Recombinant Human HBG2 Protein, Myc/DDK-tagged, C13 and N15-labeled

Cat. No. HBG2-5619H **Lot. No.** (See product label)

SPECIFICATION

Product Overview

HBG2 MS Standard C13 and N15-labeled recombinant protein (NP_000175) with a C-terminal MYC/DDK tag, was expressed in HEK293 cells.

Species

Human

Source

HEK293

Description

The gamma globin genes (HBG1 and HBG2) are normally expressed in the fetal liver, spleen and bone marrow. Two gamma chains together with two alpha chains constitute fetal hemoglobin (HbF) which is normally replaced by adult hemoglobin (HbA) at birth. In some beta-thalassemias and related conditions, gamma chain production continues into adulthood. The two types of gamma chains differ at residue 136 where glycine is found in the G-gamma product (HBG2) and alanine is found in the A-gamma product (HBG1). The former is predominant at birth. The order of the genes in the beta-globin cluster is: 5'- epsilon -- gamma-G -- gamma-A -- delta -- beta--3'.

Molecular Mass

16.1 kDa

AA Sequence

MGHFTEEDKATITSLWGKVNVEDAGGETLGRLLVVYPWTQRFFDSFGNLSSASAIM
GNPKVKAHGKKVLTSLGDAIKHLDDLKGTFAQLSELHCDKLHVDPENFKLLGNVLVT
VLAIFGKFTPEVQASWQKMVTAVASALSSRYHTRTRPLEQKLISEEDLAANDILDY
KDDDDKV

 Tel: 1-631-559-9269 1-516-512-3133

 Email: info@creative-biomart.com  Fax: 1-631-938-8127

 45-1 Ramsey Road, Shirley, NY 11967, USA

Purity	> 80% as determined by SDS-PAGE and Coomassie blue staining
Stability	Stable for 3 months from receipt of products under proper storage and handling conditions.
Storage	Store at -80 centigrade. Avoid repeated freeze-thaw cycles.
Concentration	50 µg/mL as determined by BCA
Storage Buffer	100 mM glycine, 25 mM Tris-HCl, pH 7.3.

GENE INFORMATION

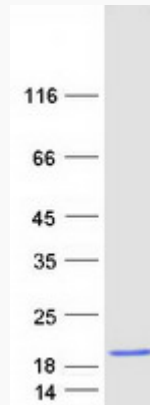
Gene Name	HBG2 hemoglobin subunit gamma 2 [Homo sapiens (human)]
Official Symbol	HBG2
Synonyms	HBG2; hemoglobin subunit gamma 2; TNCY; HBG-T1; hemoglobin subunit gamma-2; G-gamma globin Paulinia; abnormal hemoglobin; gamma globin; gamma-2-globin; gamma-globin chain; hb F Ggamma; hemoglobin gamma-2 chain; hemoglobin gamma-G chain; hemoglobin, gamma G; methemoglobin
Gene ID	3048
mRNA Refseq	NM_000184
Protein Refseq	NP_000175
MIM	142250
UniProt ID	P69892

 Tel: 1-631-559-9269 1-516-512-3133

 Email: info@creative-biomart.com  Fax: 1-631-938-8127

 45-1 Ramsey Road, Shirley, NY 11967, USA

SDS-PAGE



 Tel: 1-631-559-9269 1-516-512-3133

 Email: info@creative-biomart.com  Fax: 1-631-938-8127

 45-1 Ramsey Road, Shirley, NY 11967, USA