

Recombinant Human HCCS Protein, Myc/DDK-tagged, C13 and N15-labeled

Cat. No. HCCS-1652H **Lot. No.** (See product label)

SPECIFICATION

Product Overview	HCCS MS Standard C13 and N15-labeled recombinant protein (NP_001116080) with a C-terminal MYC/DDK tag, was expressed in HEK293 cells.
Species	Human
Source	HEK293
Description	The protein encoded by this gene is an enzyme that covalently links a heme group to the apoprotein of cytochrome c. Defects in this gene are a cause of microphthalmia syndromic type 7 (MCOPS7). Three transcript variants encoding the same protein have been found for this gene.
Molecular Mass	30.4 kDa
AA Sequence	MGLSPSAPAVAVQASNASASPPSGCPMHEGKMKGCPVNTEPSGPTCEKKTYSVPA HQERAYEYVECPIRGTAAENKENLDPSNLMPPPNQTPAPDQPALSTVREESSIPRA DSEKKWVYPSEQMFWNAMLKKGWKWKDEDISQKDMYNIIRIHNQNNEQAWKEILK WEALHAAECPCGPSLIRFGGKAKEYSPRARIRSWMGYELPFDRHDWIINRCGTEVR YVIDYYDGGEVNKDYQFTILDVRPALDSLAVWDRMKVAWWRWTSTRTRPLEQKLI SEEDLAANDILDYKDDDDKV
Purity	> 80% as determined by SDS-PAGE and Coomassie blue staining
Stability	Stable for 3 months from receipt of products under proper storage and handling

 Tel: 1-631-559-9269 1-516-512-3133

 Email: info@creative-biomart.com  Fax: 1-631-938-8127

 45-1 Ramsey Road, Shirley, NY 11967, USA

conditions.

Storage Store at -80 centigrade. Avoid repeated freeze-thaw cycles.

Concentration 50 µg/mL as determined by BCA

Storage Buffer 100 mM glycine, 25 mM Tris-HCl, pH 7.3.

GENE INFORMATION

Gene Name HCCS holocytochrome c synthase [Homo sapiens (human)]

Official Symbol HCCS

Synonyms HCCS; holocytochrome c synthase; holocytochrome c synthase (cytochrome c heme lyase); cytochrome c-type heme lyase; CCHL; cytochrome c heme lyase; cytochrome c heme-lyase; holocytochrome c-type synthase; MCOPS7; DKFZp779I1858;

Gene ID 3052

mRNA Refseq NM_001122608

Protein Refseq NP_001116080

MIM 300056

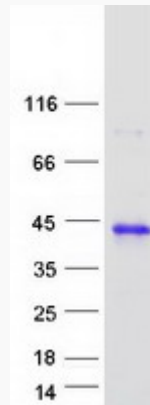
UniProt ID P53701

 Tel: 1-631-559-9269 1-516-512-3133

 Email: info@creative-biomart.com  Fax: 1-631-938-8127

 45-1 Ramsey Road, Shirley, NY 11967, USA

SDS-PAGE



 Tel: 1-631-559-9269 1-516-512-3133

 Email: info@creative-biomart.com  Fax: 1-631-938-8127

 45-1 Ramsey Road, Shirley, NY 11967, USA