

Recombinant Human HCCS Protein (Met1-Ser268), N-His tagged

Cat. No. HCCS-2713H Lot. No. (See product label)

SPECIFICATION

Product Overview	Recombinant human HCCS (Met1-Ser268) protein fused with the N-His tag was expressed in E. coli.
Species	Human
Source	E.coli
ProteinLength	Met1-Ser268
Molecular Mass	32.91 kDa
Purity	>90 % as determined by SDS-PAGE.
Notes	For research use only.
Storage	Use a manual defrost freezer and avoid repeated freeze thaw cycles. Store at 2 to 8 centigrade for one week. Store at -20 to -80 centigrade for twelve months from the date of receipt.
Storage Buffer	0.01M PBS, pH 7.4, 0.02 % NLS
Reconstitution	Reconstitute in sterile water for a stock solution.
Shipping	In general, proteins are provided as lyophilized powder/frozen liquid. They are

 Tel: 1-631-559-9269 1-516-512-3133

 Email: info@creative-biomart.com  Fax: 1-631-938-8127

 45-1 Ramsey Road, Shirley, NY 11967, USA

shipped out with dry ice/blue ice unless customers require otherwise.

GENE INFORMATION

Gene Name HCCS holocytochrome c synthase [Homo sapiens (human)]

Official Symbol HCCS

Synonyms HCCS; holocytochrome c synthase; holocytochrome c synthase (cytochrome c heme lyase); cytochrome c-type heme lyase; CCHL; cytochrome c heme lyase; cytochrome c heme-lyase; holocytochrome c-type synthase; MCOPS7; DKFZp779I1858;

Gene ID 3052

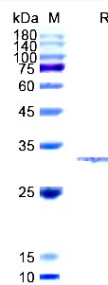
mRNA Refseq NM_001122608

Protein Refseq NP_001116080

MIM 300056

UniProt ID P53701

SDS-PAGE



Tel: 1-631-559-9269 1-516-512-3133

Email: info@creative-biomart.com Fax: 1-631-938-8127

45-1 Ramsey Road, Shirley, NY 11967, USA