

Recombinant Human HCFC1R1 Protein, Myc/DDK-tagged, C13 and N15-labeled

Cat. No. HCFC1R1-1863H **Lot. No.** (See product label)

SPECIFICATION

Product Overview	HCFC1R1 MS Standard C13 and N15-labeled recombinant protein (NP_060355) with a C-terminal MYC/DDK tag, was expressed in HEK293 cells.
Species	Human
Source	HEK293
Description	Regulates HCFC1 activity by modulating its subcellular localization. Overexpression of HCFC1R1 leads to accumulation of HCFC1 in the cytoplasm. HCFC1R1-mediated export may provide the pool of cytoplasmic HCFC1 required for import of virion-derived VP16 into the nucleus.
Molecular Mass	15.3 kDa
AA Sequence	MILQQPLQRGPQGGGAQRLPRAALGVTWGLDASSPLRGAVPMSTKRRLEEEQEPLR KQFLSEENMATHFSQLSLHNDHPYCSPPMTFSPALPPLRSPCSELLLWRYPGSLIPE ALRLLRLGDTPSPYPATPAGDIMELTRTRPLEQKLISEEDLAANDILDYKDDDDKV
Purity	> 80% as determined by SDS-PAGE and Coomassie blue staining
Stability	Stable for 3 months from receipt of products under proper storage and handling conditions.
Storage	Store at -80 centigrade. Avoid repeated freeze-thaw cycles.

 Tel: 1-631-559-9269 1-516-512-3133

 Email: info@creative-biomart.com  Fax: 1-631-938-8127

 45-1 Ramsey Road, Shirley, NY 11967, USA

Concentration 50 µg/mL as determined by BCA

Storage Buffer 100 mM glycine, 25 mM Tris-HCl, pH 7.3.

GENE INFORMATION

Gene Name HCFC1R1 host cell factor C1 regulator 1 [Homo sapiens (human)]

Official Symbol HCFC1R1

Synonyms HCFC1R1; host cell factor C1 regulator 1 (XPO1 dependent); host cell factor C1 regulator 1 (XPO1 dependant); host cell factor C1 regulator 1; FLJ20568; HPIP; HCF-1 beta-propeller interacting protein; HCF-1 beta-propeller-interacting protein; MGC70711; MGC99622;

Gene ID 54985

mRNA Refseq NM_017885

Protein Refseq NP_060355

MIM 618818

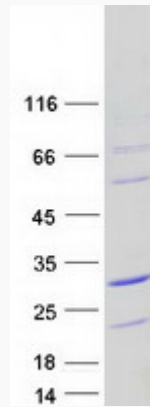
UniProt ID Q9NWW0

 Tel: 1-631-559-9269 1-516-512-3133

 Email: info@creative-biomart.com  Fax: 1-631-938-8127

 45-1 Ramsey Road, Shirley, NY 11967, USA

SDS-PAGE



 Tel: 1-631-559-9269 1-516-512-3133

 Email: info@creative-biomart.com  Fax: 1-631-938-8127

 45-1 Ramsey Road, Shirley, NY 11967, USA