

Recombinant Human HCFC2 Protein, GST-tagged

Cat. No. HCFC2-4619H Lot. No. (See product label)

SPECIFICATION

Product Overview	Human HCFC2 full-length ORF (AAH33799, 1 a.a. - 792 a.a.) recombinant protein with GST-tag at N-terminal.
Species	Human
Source	Wheat Germ
Description	This gene encodes one of two proteins which interact with VP16, a herpes simplex virus protein that initiates virus infection. Both the encoded protein and the original Herpes host cell factor interact with VP16 through a beta-propeller domain. The original Herpes host cell factor, however, is effective at initiating viral infection while the encoded protein is not. Transcripts of varying length due to alternative polyadenylation signals have been described. [provided by RefSeq]
Molecular Mass	112.86 kDa
AA Sequence	MAAPSLLNWRRVSSFTGPVPRARHGHRAVAIRELMIIFGGGNEGIADDELHVYNTATN QWFLPAVRGDIPPGCAAHGFVCDGTRILVFGGMVEYGRYSNELYELQASRWLWKK VKPHPPPSGLPPCPRLGHSFSLYGNKCYLFGGLANESEDSNNNVPRYLNDFYEEL QHSGSVVGWSIPVTKGVVPSPRESHTAVIYCKKDSGSPKMYVFGGMCGARLDDLW QLDLETMSWSKPETKGTVPLPRSLHTASVIGNKMYIFGGWVPHKGENTETSPHDCE WRCTSSFSYLNLDTTEWTTLVSDSQEDKKNSRPRPRAGHCAVAIGTRLYFWSGRD GYKKALNSQVCKDLWYLDTEKPPAPSQVQLIKATTNSFHVKWDEVSTVEGYLLQL STDLPYQAASSDSSAAPNMQGV RMDPHRQGSNNIVPNSINDTINSTKTEQPATKET

 Tel: 1-631-559-9269 1-516-512-3133

 Email: info@creative-biomart.com  Fax: 1-631-938-8127

 45-1 Ramsey Road, Shirley, NY 11967, USA

SMKNKPDFKALTDASNAILYPSLASNASNHNSHVVDMLRKNEGPHTSANVGVLSCL
 DVRTVIPETSVSSTVSSTQTMVTQQTIKTESSTNGAVVKDETSLTTFSTKSEVDETY
 ALPATKISR VETHATATPFSKETPSNPVATVKAGERQWCDVGIFKNNTALVSQFYLL
 PKGKQSISKVGNADVPDYSLLKKQDLVPGTGYRFRVAAINGCGIGPFSKISEFKTCIP
 GFPGAPSAVRISKNVEGIHLSWEPPTSPSGNILEYSAYLAIRTAQIQDNPSQLVFMRIY
 CGLKTSCIVTAGQLANAHIDYTSRPAIVFRISAKNEKGYGPATQVRWLQGNKKAPL
 N


Applications	Enzyme-linked Immunoabsorbent Assay Western Blot (Recombinant protein) Antibody Production Protein Array
Notes	Best use within three months from the date of receipt of this protein.
Storage	Store at -8 centigrade. Aliquot to avoid repeated freezing and thawing.
Storage Buffer	50 mM Tris-HCl, 10 mM reduced Glutathione, pH=8.0 in the elution buffer.

GENE INFORMATION

Gene Name	HCFC2 host cell factor C2 [Homo sapiens]
Official Symbol	HCFC2
Synonyms	HCFC2; host cell factor C2; host cell factor 2; HCF 2; C2 factor; HCF2; HCF-2; FLJ94012;
Gene ID	29915
mRNA Refseq	NM_013320

 Tel: 1-631-559-9269 1-516-512-3133

 Email: info@creative-biomart.com  Fax: 1-631-938-8127

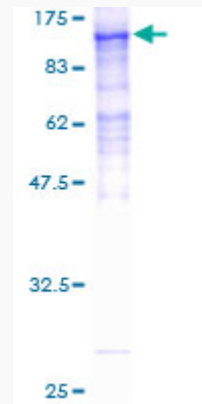
 45-1 Ramsey Road, Shirley, NY 11967, USA

Protein Refseq NP_037452


MIM 607926

UniProt ID Q9Y5Z7

**Quality Control
Testing**



12.5% SDS-PAGE Stained with Coomassie Blue.

 Tel: 1-631-559-9269 1-516-512-3133

 Email: info@creative-biomart.com  Fax: 1-631-938-8127

 45-1 Ramsey Road, Shirley, NY 11967, USA