

# Recombinant Human Hemopoietic Cell Kinase, SH3 Domain, GST-tagged

Cat. No. HCK-171H Lot. No. (See product label)

## SPECIFICATION

**Species** Human

**Source** E.coli

**Description**

N-terminal GST tagged Hck SH3 domain. Hck SH3 domain is the SH3 domain of Hck tyrosine kinase. SH3 domains are known to bind proline rich peptides. The Hck SH3 domain has been expressed as a fusion protein with GST allowing expression in E. coli and purification by affinity chromatography. The native GST-Hck-SH3 is the ideal tool for in vitro/in vivo investigations of the behaviour of cellular prions. It may be used for protein-protein interaction studies as well as for in vitro/in vivo conversion studies. The GST-Tag facilitates the protein's application in typical GST pull-down assays.

**Purity** ≥90% by SDS-PAGE.

**Form** Lyophilized.

**Usage** For in vitro use only.

**Storage** Quality guaranteed for 12 months. Store at -20°C. Avoid freeze / thaw cycles.

## GENE INFORMATION

**Gene Name** HCK hemopoietic cell kinase [ Homo sapiens ]

 Tel: 1-631-559-9269 1-516-512-3133

 Email: [info@creative-biomart.com](mailto:info@creative-biomart.com)  Fax: 1-631-938-8127

 45-1 Ramsey Road, Shirley, NY 11967, USA

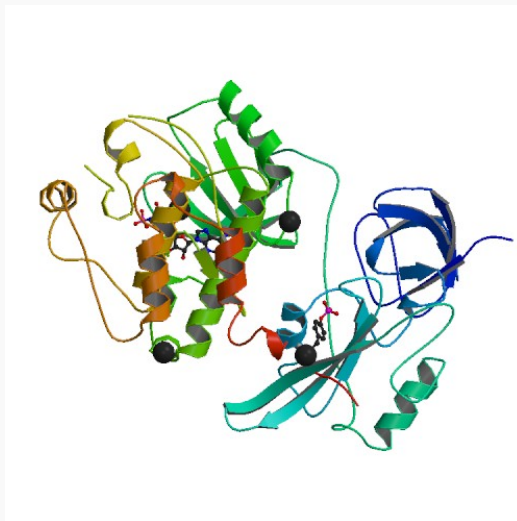
<b>Synonyms</b>	HCK; hemopoietic cell kinase; JTK9; Tyrosine-protein kinase HCK; EC2.7.10.2; Hemopoietic cell kinase; p59-HCK/p60-HCK
<b>Gene ID</b>	3055
<b>mRNA Refseq</b>	NM_002110
<b>Protein Refseq</b>	NP_002101
<b>MIM</b>	142370
<b>UniProt ID</b>	P08631
<b>Chromosome Location</b>	20q11-q12
<b>Pathway</b>	Chemokine signaling pathway; Fc gamma R-mediated phagocytosis; HIV Infection
<b>Function</b>	ATP binding; non-membrane spanning protein tyrosine kinase activity; nucleotide binding; protein binding; transferase activity

 Tel: 1-631-559-9269 1-516-512-3133

 Email: [info@creative-biomart.com](mailto:info@creative-biomart.com)  Fax: 1-631-938-8127

 45-1 Ramsey Road, Shirley, NY 11967, USA

PDB rendering based  
on 1ad5.



 Tel: 1-631-559-9269 1-516-512-3133

 Email: [info@creative-biomart.com](mailto:info@creative-biomart.com)  Fax: 1-631-938-8127

 45-1 Ramsey Road, Shirley, NY 11967, USA