

Recombinant Full Length Human HCLS1 Protein, C-Flag-tagged

Cat. No. HCLS1-1979HFL **Lot. No.** (See product label)

SPECIFICATION

Product Overview	Recombinant Full Length Human HCLS1 Protein, fused to Flag-tag at C-terminus, was expressed in Mammalian cells.
Species	Human
Source	Mammalian Cells
Description	Enables RNA polymerase II-specific DNA-binding transcription factor binding activity and protein kinase binding activity. Involved in several processes, including positive regulation of intracellular signal transduction; positive regulation of protein phosphorylation; and regulation of transcription, DNA-templated. Located in cytosol; nucleus; and plasma membrane. Part of transcription regulator complex.
Form	25 mM Tris HCl, pH 7.3, 100 mM glycine, 10% glycerol.
Molecular Mass	53.8 kDa
AA Sequence	MWKSVVGHDEVSVSVETQGDDWDTDPDFVNDISEKEQRWGAKTIEGSGRTEHINIHL QLRNKVSEEHDVLRK KEMESGPKASHGYGGRFGVERDRMDKSAVGHEYVAEVEK HSSQTDAAKGFGGKYGVERDRADKSAVGFDY KGEVEKHTSQKDYSRGGFRYGV EKDKWDKAALGYDYKGETEKHESQRDYAKGFGGQYGIQKDRVDKSAV GFNEMEA PTTAYKKTTPIEAASSGARGLKAKFESMAEEKRKREEEKAQQVARRQQRKAVTK RSPEAPQ PVIAMEEPAVPAPLPKISSAWPPVGTTPPSESEPVRTSREHPVPLLPI RQTLPEDNEEPPALPPRTLE GLQVEEPPVYEAPEPEPEPEPEPENDYEDVEEMD

 Tel: 1-631-559-9269 1-516-512-3133

 Email: info@creative-biomart.com  Fax: 1-631-938-8127

 45-1 Ramsey Road, Shirley, NY 11967, USA

RHEQEDEPEGDYEEVLEPEDSSFSSALAGSSGCPA GAGAGAVALGISAVALYDYQ
 GEGSDELSFDPDDVITDIEMVDEGWWRGRCHGHFGLFPANYVKLLE TRTRPLEQK
 LISEEDLAANDILDYKDDDDKV

Purity	> 80% as determined by SDS-PAGE and Coomassie blue staining.
Stability	Stable for 12 months from the date of receipt of the product under proper storage and handling conditions. Avoid repeated freeze-thaw cycles.
Storage	Store at -80 centigrade.
Concentration	>50 ug/mL as determined by microplate BCA method.
Preparation	Recombinant protein was captured through anti-DDK affinity column followed by conventional chromatography steps.
Protein Families	Transcription Factors
Protein Pathways	Pathogenic Escherichia coli infection, Tight junction
Full Length	Full L.

GENE INFORMATION

Gene Name	HCLS1 hematopoietic cell-specific Lyn substrate 1 [Homo sapiens (human)]
Official Symbol	HCLS1
Synonyms	HS1; p75; CTTNL; lckBP1
Gene ID	3059

 Tel: 1-631-559-9269 1-516-512-3133

 Email: info@creative-biomart.com  Fax: 1-631-938-8127

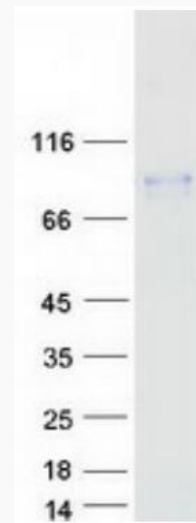
 45-1 Ramsey Road, Shirley, NY 11967, USA

mRNA Refseq [NM_005335.6](#)

Protein Refseq [NP_005326.3](#)

MIM [601306](#)

UniProt ID [P14317](#)



Coomassie blue staining of purified HCLS1 protein.

 Tel: 1-631-559-9269 1-516-512-3133

 Email: info@creative-biomart.com  Fax: 1-631-938-8127

 45-1 Ramsey Road, Shirley, NY 11967, USA